



5/35-37 Talara Road GYMEA NSW

2 1 1

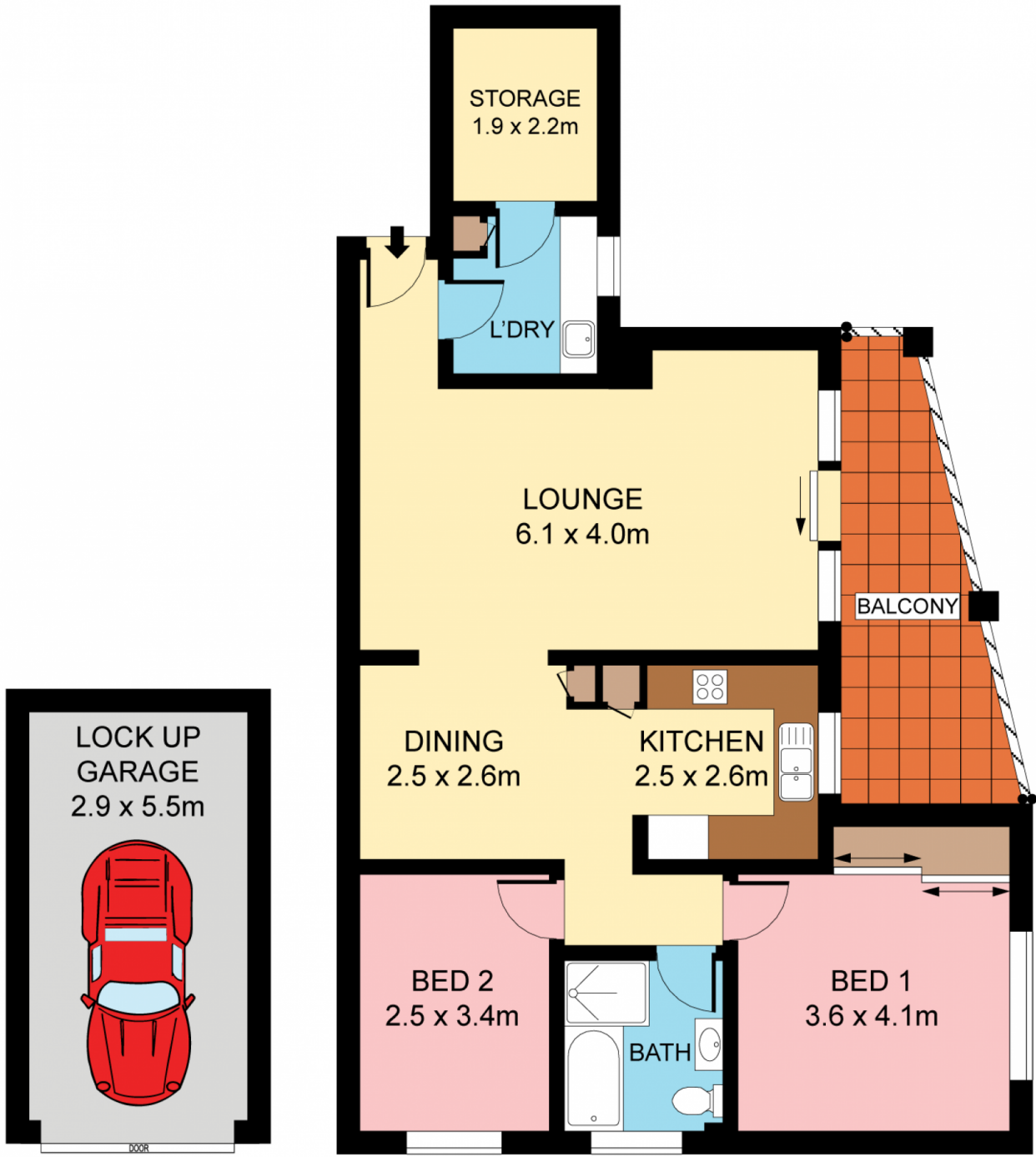
Substantial and stylish, this first floor apartment presents expansive light filled interiors updated throughout for instant enjoyment. Enhanced by a perfect due north aspect and leafy corner position overlooking the quiet street it delivers further appeal with its exceptional setting a quick stroll to the village shops, bus and rail.
Strata levies: \$520.85 per quarter

Building Size : 115 sqm
View : <https://www.jreproperty.com.au/sale/nsw/sutherland/gyMEA/residential/unit/7488567>

- Timber floors, generous family living
- Sliders open to the alfresco balcony
- Separate dining, modern electric kitchen
- Two generous beds, north facing master
- Stylish bathroom, laundry, large storage
- Single lock up garage, security building



Dion Moon
02 9540 2222



LEVEL ONE



Plans shown are for presentation purposes only and are not part of any legal document or title. They are subject to errors, omissions, inaccuracies and should not be used as a sole and accurate reference. Interested parties should make their own inquiries using independent sources.