



18 North West Arm Road GYMEA NSW

4 2 1

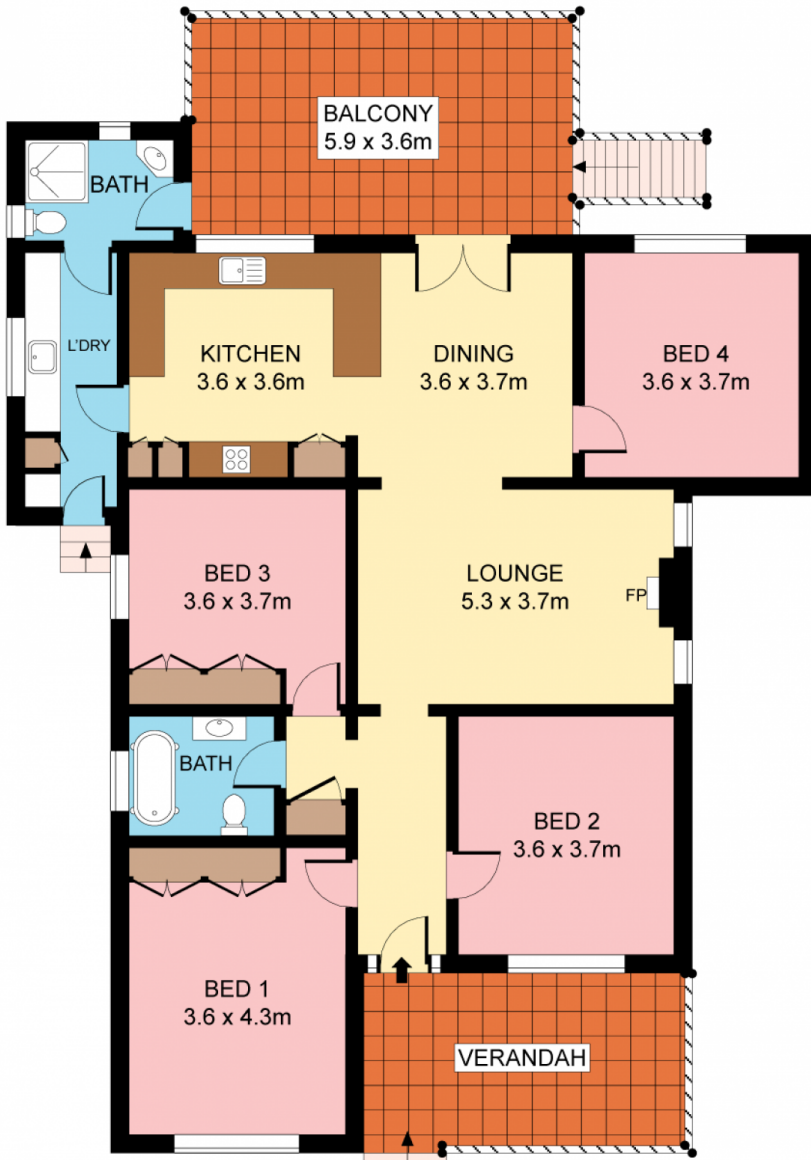
This very special home is a one of a kind, rich in character charm and history. Built in the early 1900s, it displays all the ambiance of its era whilst a sympathetic renovation seamlessly integrates a quality array of modern amenity. Providing generous proportions perfect for the family, its a quick walk to the village and rail.

Land Size : 695.6 sqm
View : <https://www.jreproperty.com.au/sale/nsw/sutherland/gyMEA/residential/house/7488569>

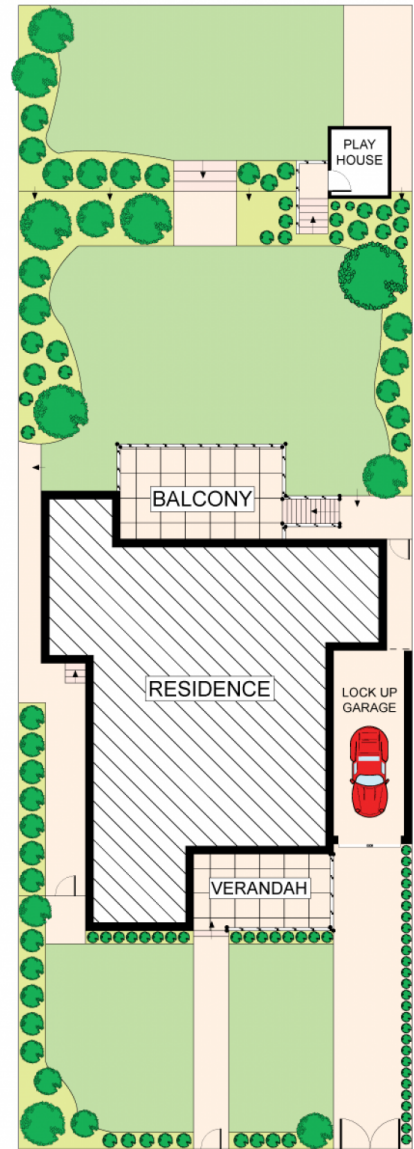
- Wide original flooring, soaring ceilings
- Living with slow combustion fireplace
- Granite & gas kitchen, casual dining
- Front and back decks, generous beds
- Great for entertaining & child friendly yard
- Excellent storage, kids cubby, SLUG



Luke Jeffree
02 9540 2222



GROUND FLOOR



SITE PLAN (NOT TO SCALE)



Plans shown are for presentation purposes only and are not part of any legal document or title. They are subject to errors, omissions, inaccuracies and should not be used as a sole and accurate reference. Interested parties should make their own inquiries using independent sources.

18 NORTH WEST ARM ROAD

GYMEA