



73 Ellesmere Road GYMEA BAY NSW

4 2 2

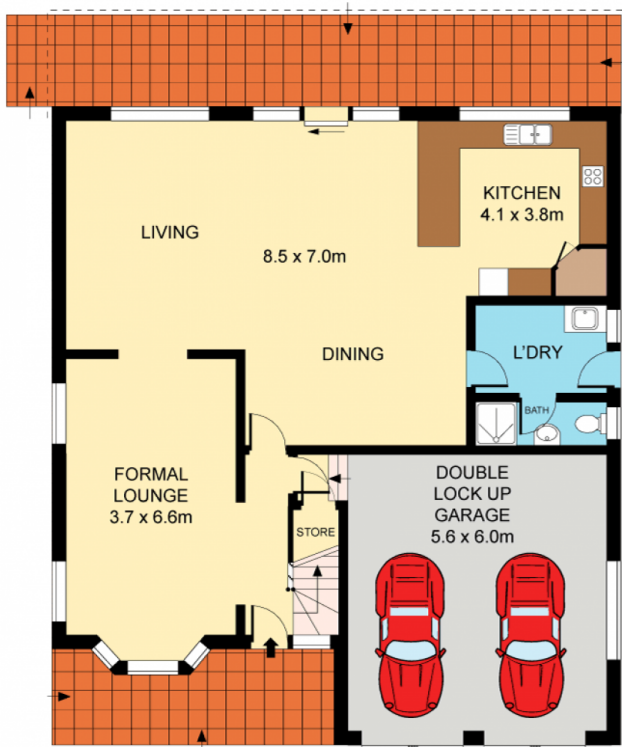
Blissfully quiet, tucked away within one of Gymea Bays premier settings, this quality dual level residence delivers the perfect package for those looking for space, excellent entertaining areas and room for the kids to grow and play. Offered for the first time since built in the late 90s, its timeless interiors provide immediate comfort.

Type : House
Land Size : 518.5 sqm
View : <https://www.jreproperty.com.au/sale/nsw/sutherlandland/gymea-bay/residential/house/7488570>

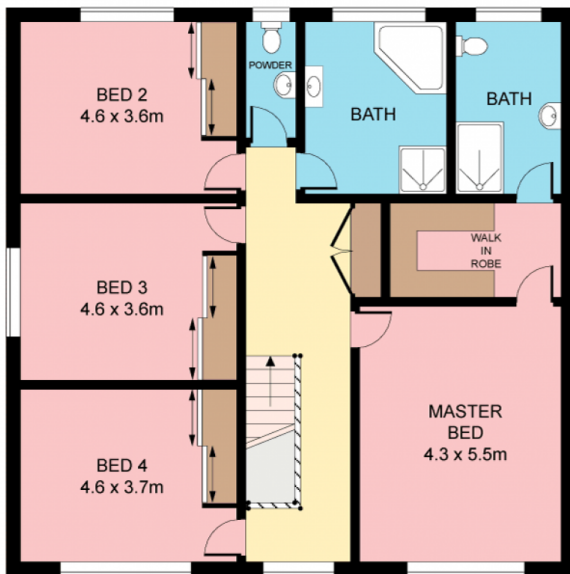
Substantial floorplan, parquetry floors
 Expansive open plan living and dining
 Generous formal lounge, ducted air
 Large granite kitchen, alfresco terrace
 Level fenced yard, master with ensuite
 Internal entry DLUG, Kirrawee High catch.



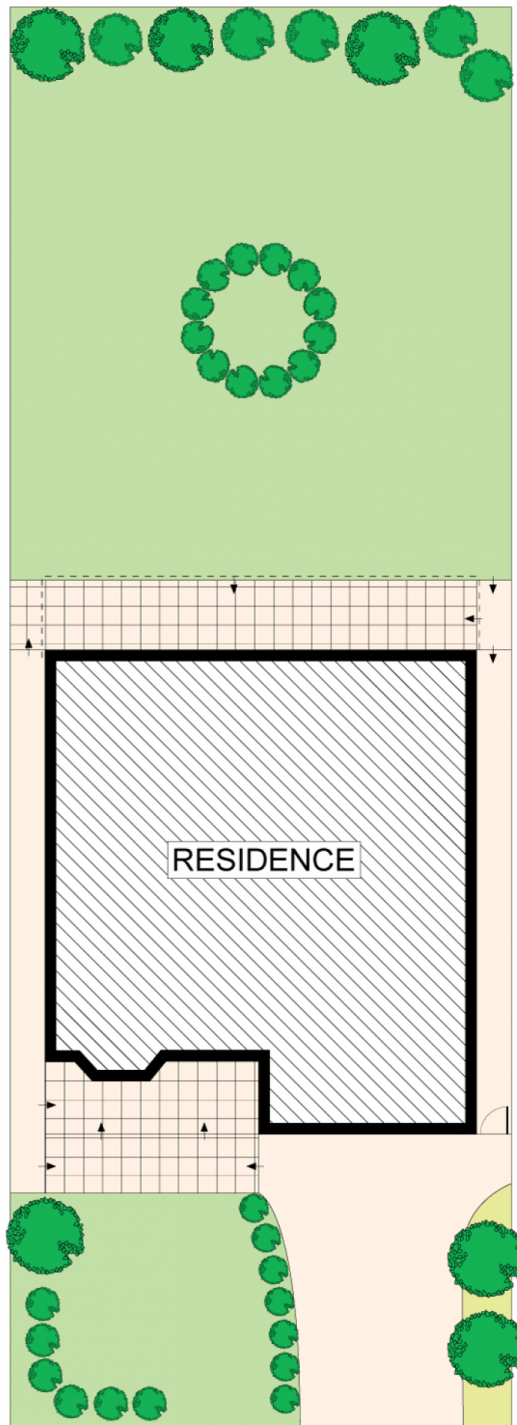
Luke Jeffree
02 9540 2222



GROUND FLOOR



FIRST FLOOR



SITE PLAN (NOT TO SCALE)



Plans shown are for presentation purposes only and are not part of any legal document or title. They are subject to errors, omissions, inaccuracies and should not be used as a sole and accurate reference. Interested parties should make their own inquiries using independent sources.

