

4/58-64 Talara Road GYMEA NSW

2 1 2

This unique 2 bedroom ground floor apartment comprises of 119sqm (150sqm total) and offers a complete private and tranquil setting. Open plan living perfection, fuses a huge alfresco entertaining courtyard together with a spacious living/dining area flowing into the double size bedrooms. Moments to Gymea Village, railway, cafes and restaurants.

Building Size : 13 sqm
View : <https://www.jreproperty.com.au/sale/nsw/sutherland/gymea/residential/unit/7488573>

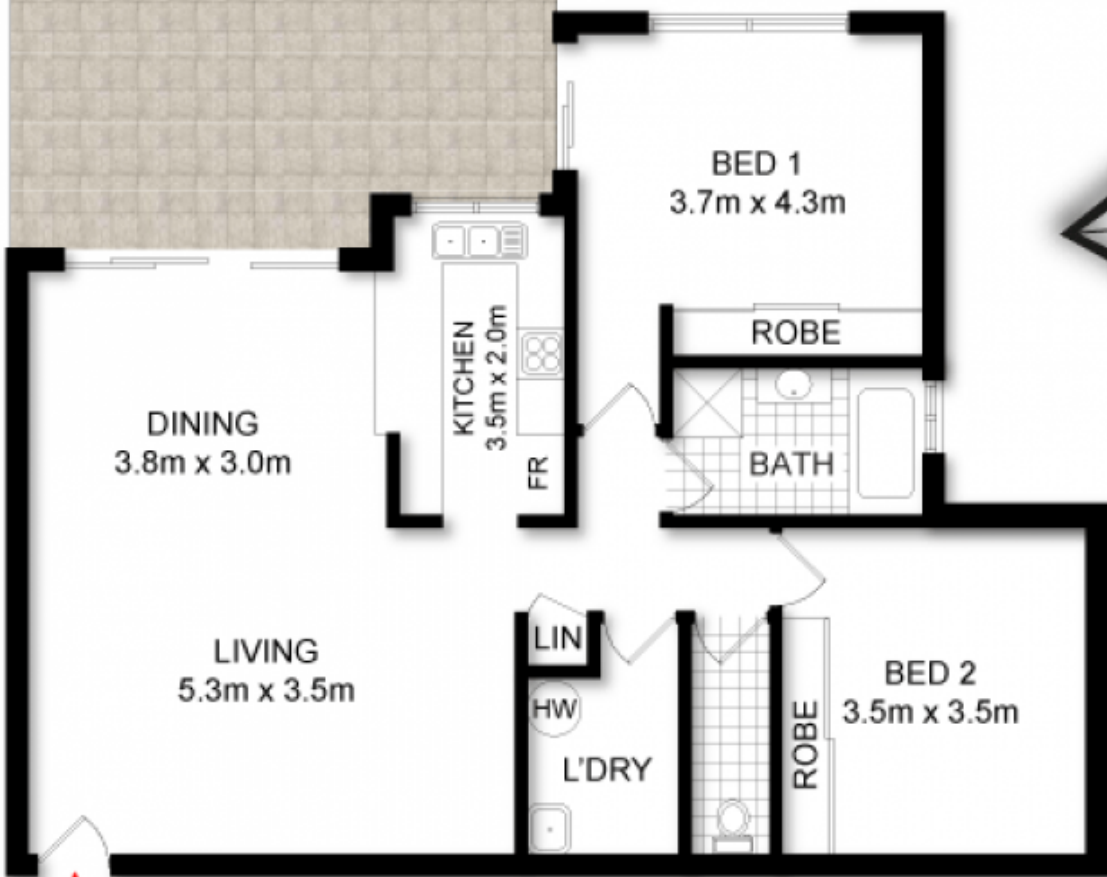
- Large sumptuous kitchen with breakfast bar
- Huge entertaining terrace with leafy setting
- Spacious bedrooms, BIRs in both
- Elegant bathroom and spacious laundry
- Reverse cycle air, Double side by side LUG



Dion Moon
02 9540 2222



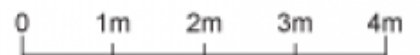
COURTYARD
6.0m x 6.0m



ENTRY

ADDRESS:

4/58 Talara Road, GYMEA



DISCLAIMER: THIS IS FOR ILLUSTRATIVE PURPOSES ONLY. ALL DIMENSIONS ARE APPROXIMATE AND IT DOES NOT CONSTITUTE PART OF ANY LEGAL DOCUMENTS.