



33 Samuel Street PEAKHURST NSW

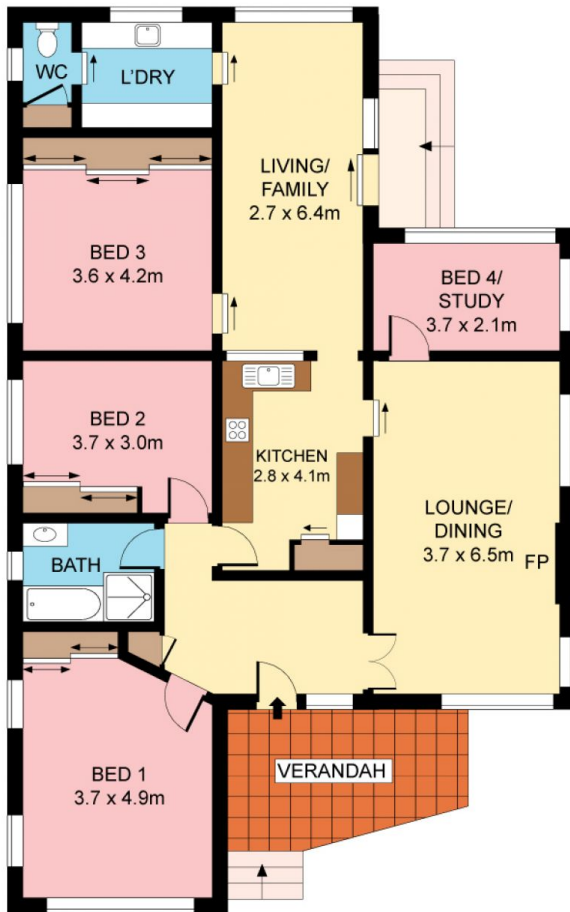
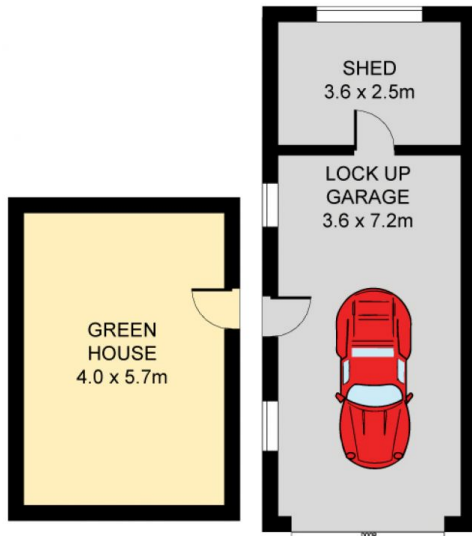
4 1 2

This delightful family home is being sold for the first time in over 50 years. Lovingly maintained, this home exudes charm and character offering an abundance of light and space awaiting your personal touches. Alternatively, this 930sqm approx (15.24 x 61.217) parcel of land sits in a tree lined street in a quiet neighbourhood ideal to knock down and rebuild a fabulous new home.

Type : House
Land Size : 930 sqm
View : <https://www.jreproperty.com.au/sale/nsw/st-george/peakhurst/residential/house/7488579>

- * 4 bedrooms plus multiple living and dining spaces
- * Live in or rent out existing dwelling
- * Potential development site (STCA)
- * Knock-down and re-build a brand new home or duplex
- * Ideally located close to shops and cafes, schools and transport

[For full version visit the website](https://www.jreproperty.com.au)



GROUND FLOOR



**SITE PLAN
(NOT TO SCALE)**



Plans shown are for presentation purposes only and are not part of any legal document or title. They are subject to errors, omissions, inaccuracies and should not be used as a sole and accurate reference. Interested parties should make their own inquiries using independent sources.