



8/61-63 Caringbah Road CARINGBAH NSW

3 2 1

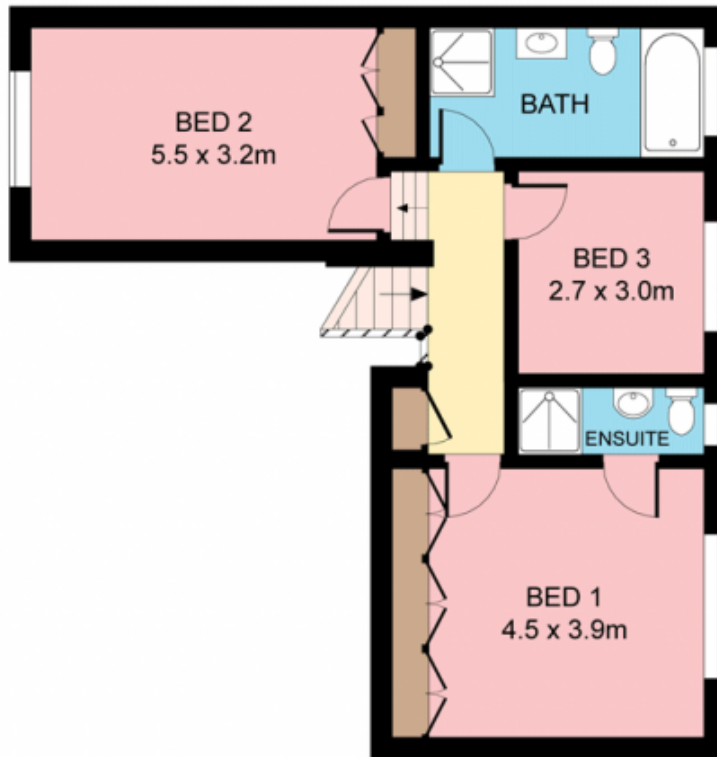
Peacefully placed in the centre of a boutique complex of just ten, this immaculate and spacious townhouse displays an impressive split level floor plan enhanced by a large rear terrace, easy care attributes and direct access to a pedestrian pathway. Held since new, its perfect for down-sizers or families close to shops, bus, rail and beach.

Type : Townhouse
Building Size : 189 sqm
View : <https://www.jreproperty.com.au/sale/nsw/sutherland/caringbah/residential/townhouse/7488591>

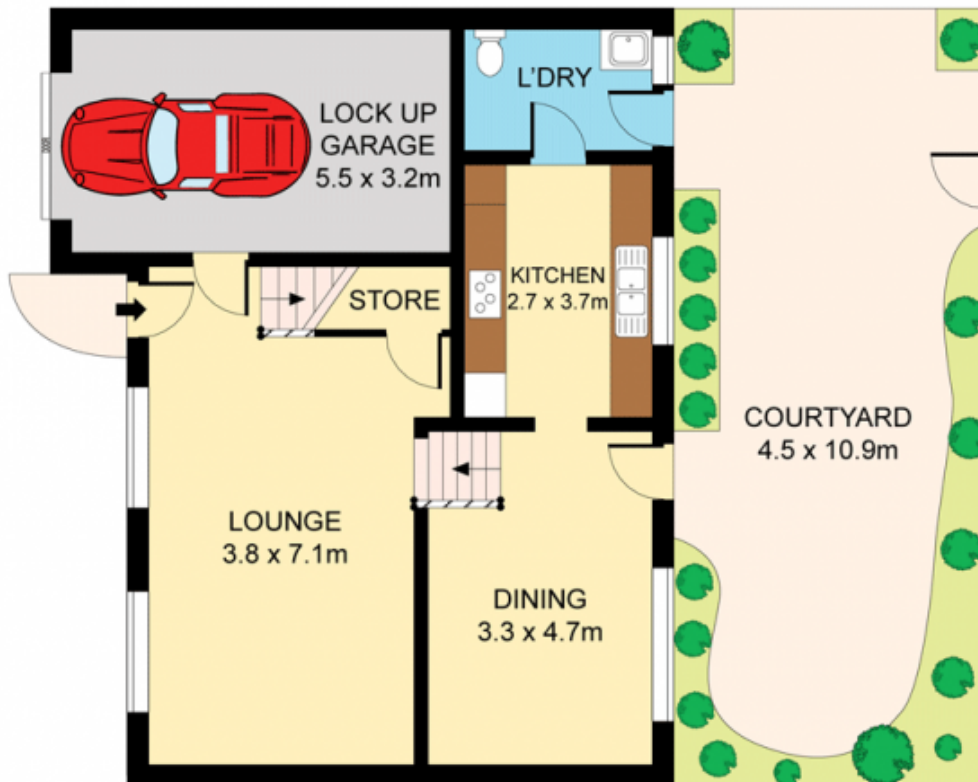
Set well back from the road, bright & sunny
 Substantial living with high vaulted ceilings
 Separate dining, spacious electric kitchen
 Large paved terrace, powder room/laundry
 Generous beds, ensuite, two with robes
 Internal SLUG, pet-friendly, visitor parking



Luke Jeffree
02 9540 2222



FIRST FLOOR



GROUND FLOOR



Plans shown are for presentation purposes only and are not part of any legal document or title. They are subject to errors, omissions, inaccuracies and should not be used as a sole and accurate reference. Interested parties should make their own inquiries using independent sources.

