



16 Kittani Street KIRRAWEE NSW

5 2 5

The property will suit a broad demographic of buyers with 5 generous sized bedrooms with built in wardrobes, ceiling fans and ducted air conditioning. The home is accompanied by an abundance of living areas, offering an open plan kitchen which overlooks the back yard, a separate dining area, and an extra-large lounge room which seamlessly flows onto the outdoor deck.

Type : House
Land Size : 623.45 sqm
View : <https://www.jreproperty.com.au/sale/nsw/sutherlandland/kirrawee/residential/house/7488597>



Luke Jeffree
02 9540 2222

Large alfresco area overlooking pool
Generous bedrooms with BIRs
Open plan kitchen, lounge and dining
Ducted A/C, internal laundry, rumpus
DLUG with additional off street parking
Dual access, Kirrawee high catchment area.

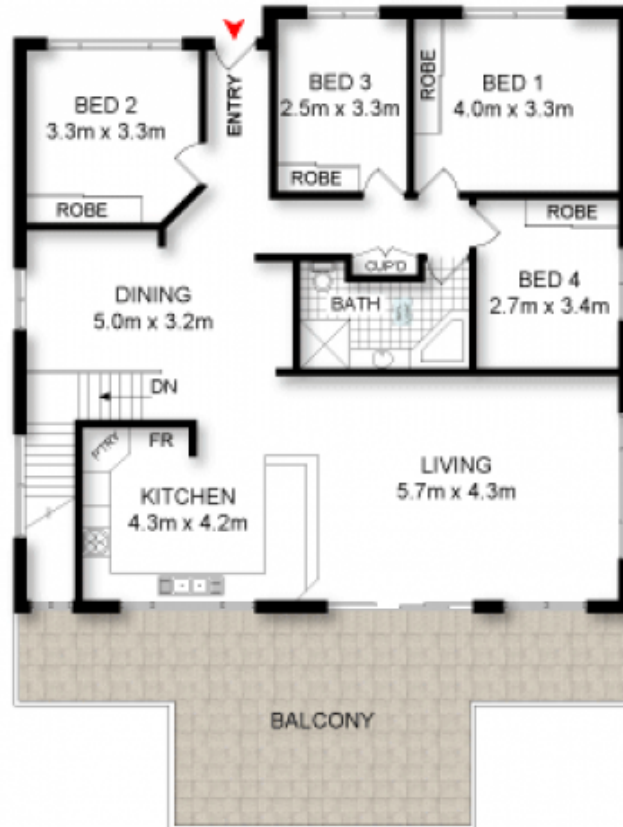
[For full version visit the website](https://www.jreproperty.com.au)



SITE PLAN (not to scale)



GROUND FLOOR



LOWER FLOOR



ADDRESS:

16 Kittani Street, KIRRAWEE

0 1m 2m 3m 4m

DISCLAIMER: THIS IS FOR ILLUSTRATIVE PURPOSES ONLY. ALL DIMENSIONS ARE APPROXIMATE AND IT DOES NOT CONSTITUTE PART OF ANY LEGAL DOCUMENTS.