



100 Manchester Road GYMEA NSW

3 1 3

Offering immense appeal with an easy living, single level floor plan, this well presented cottage style home offers generous living areas that flow out to a sunny alfresco deck area which all combine to make this an enticing package further enhanced by its superb location in the heart of Gymea and just moments to Gymea Village. Land Size 15.4 x 41.8 = 635.3 sqm

Type : House
Land Size : 635.3 sqm
View : <https://www.jreproperty.com.au/sale/nsw/sutherlandland/gymea/residential/house/7488598>

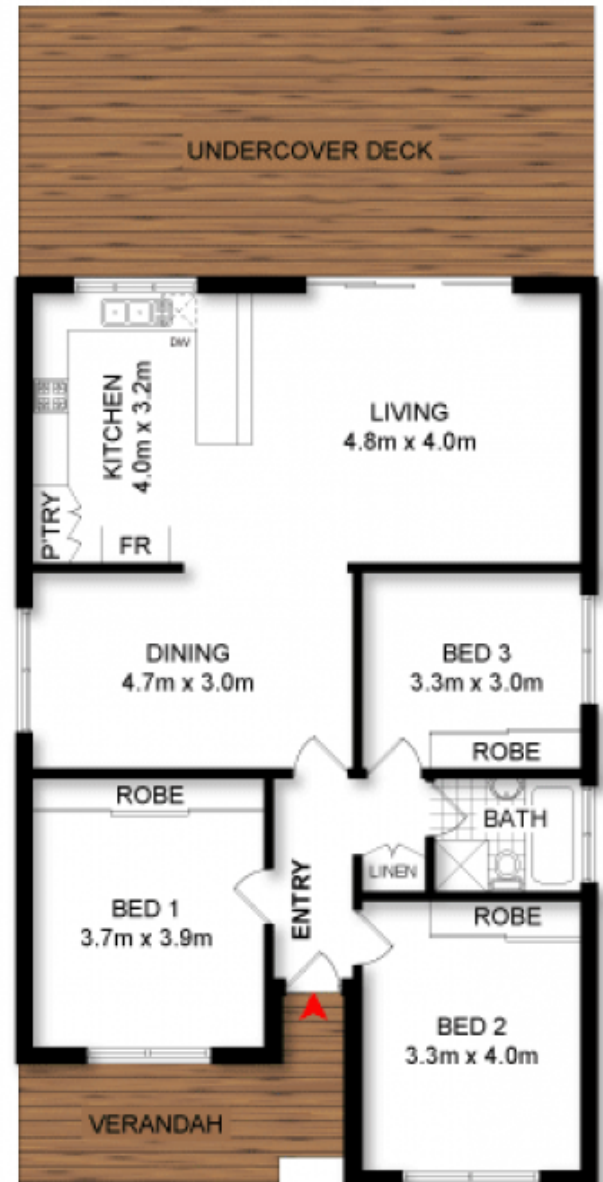
3 generous bedrooms all with BIR and ceiling fans
 Spacious lounge room , split system, separate dining
 Ample kitchen, gas appliances, plenty of bench space
 Street gas, floorboards, timber alfresco deck
 Detached teenagers retreat or home office
 Large sunny fenced yard, drive through triple carport



Luke Jeffree
02 9540 2222



SITE PLAN (not to scale)



ADDRESS:

100 Manchester Road, GYMEA

