



15/265 Port Hacking Road MIRANDA NSW

2  1  1 

This spacious villa will impress with its substantial entertaining paved & grassed courtyard and comfortable single level floor plan. All amenities are easily on hand with quick access to local shops, parks, bus, beach and bay.

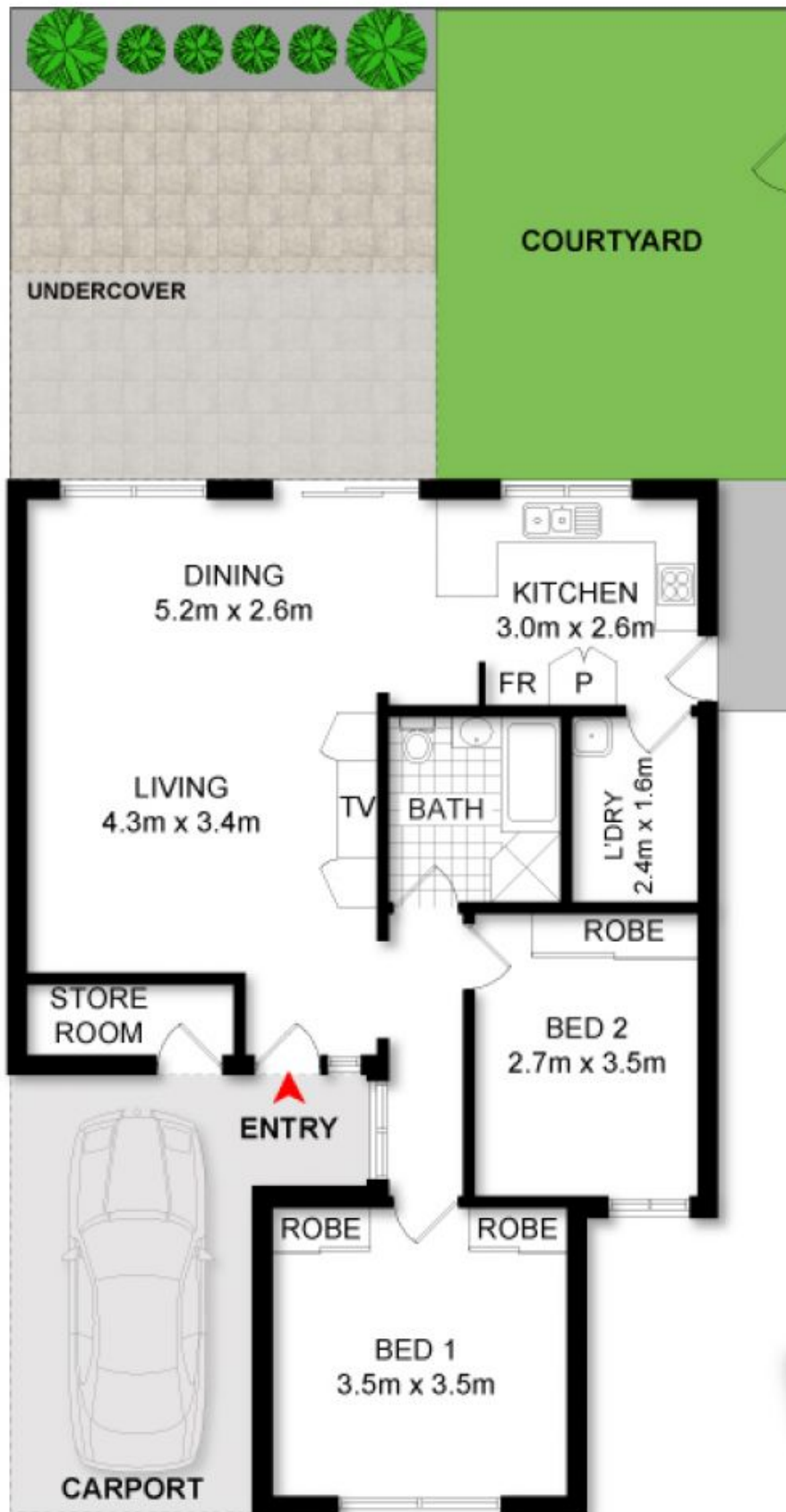
**Type** : Villa

**View** : <https://www.jreproperty.com.au/sale/nsw/sutherland/miranda/residential/villa/7488623>

Spacious lounge & dining, timber floorboards  
2 bedrooms both with fans and BIR  
Floor to ceiling tiles in the neat bathroom  
Modern kitchen with breakfast bar & dishwasher  
Split System Air Con / Extra storage room  
Single undercover carport



**Luke Jeffree**  
02 9540 2222



ADDRESS:

**15/265 Port Hacking Road, MIRANDA**



DISCLAIMER: THIS IS FOR ILLUSTRATIVE PURPOSES ONLY. ALL DIMENSIONS ARE APPROXIMATE AND IT DOES NOT CONSTITUTE PART OF ANY LEGAL DOCUMENTS.