



269 Gymea Bay Road GYMEA BAY NSW

4 2

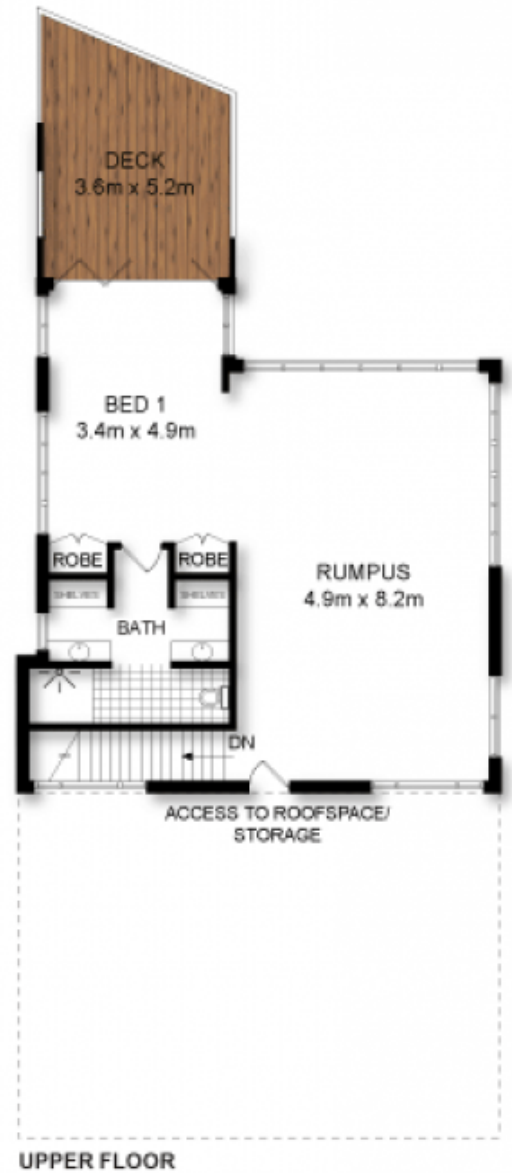
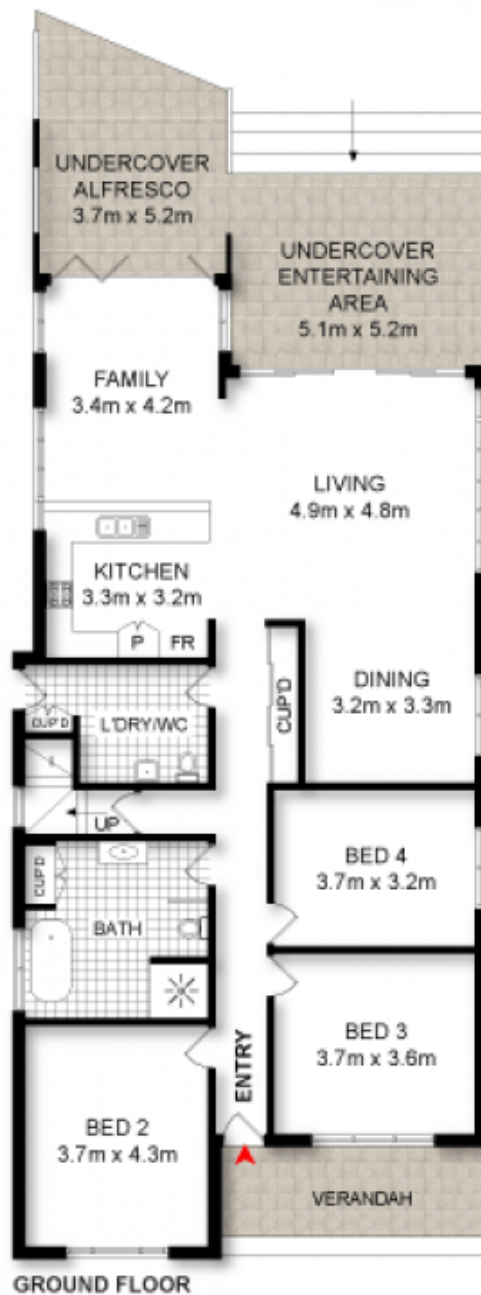
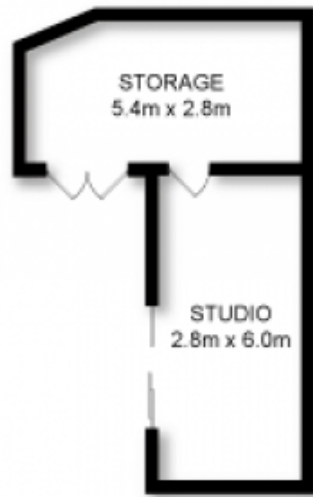
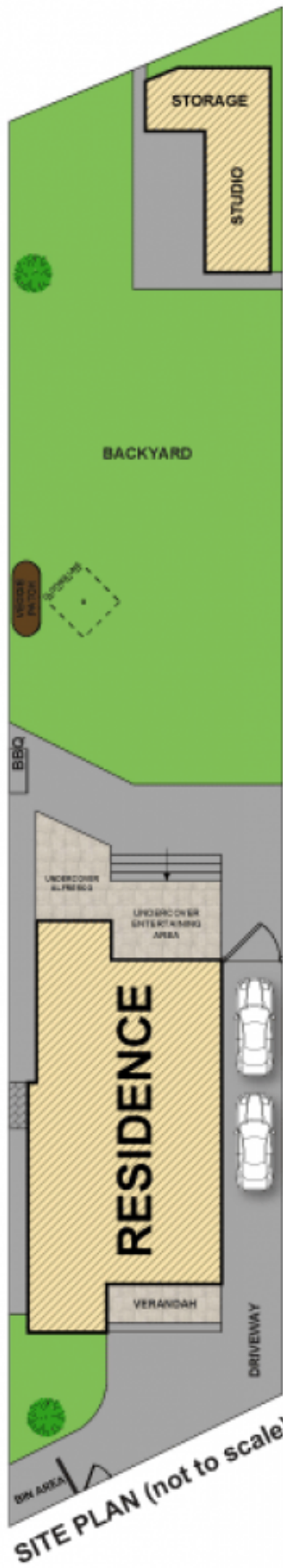
This palatial 4 bedroom Gymea Bay home blends size and classic design to create a picture perfect lifestyle in a premium setting. Combined with light filled interiors, high ceilings, timber floor boards, multiple living rooms and storage galore. Possessing an enormous sunny grassed yard & plenty of off street parking this home is perfect for the growing family and people who love to entertain. Set only moments from Gymea Bay Baths, local shops & within the Kirrawee High Catchment.

- * Exclusive parents retreat level with ensuite
- * Modern kitchen with gas appliances
- * Expansive undercover alfresco areas
- * Huge sun drenched west facing level yard
- * Separate studio with additional outdoor storage

Type : House
Land Size : 822 sqm
View : <https://www.jreproperty.com.au/sale/nsw/sutherland/gymea-bay/residential/house/7488628>



Luke Jeffree
02 9540 2222



ADDRESS:

269 GyMEA Bay Road, GYMEA BAY



DISCLAIMER: THIS IS FOR ILLUSTRATIVE PURPOSES ONLY. ALL DIMENSIONS ARE APPROXIMATE AND IT DOES NOT CONSTITUTE PART OF ANY LEGAL DOCUMENTS.