

**41 Milburn Road GYMEA NSW**

4 2 2

**AUCTION THIS SATURDAY!!**

Set on the high side of the street and within walking distance to the vibrant GyMEA Village this amazing flat parcel of 777sqm (approx) and boasting an 18.28m frontage is the perfect opportunity for you to build your dream home or capitalise on future duplex development (STCA). This sun drenched parcel of land is host to a solid original home with a variety of living options. Great sized double lock up garage with drive through access to the backyard and enough off street parking for the caravan or boat.

4 large bedrooms /split system air con  
Suitable for separate living arrangements  
Perfectly suited drainage for development  
Sun drenched level North/West facing backyard

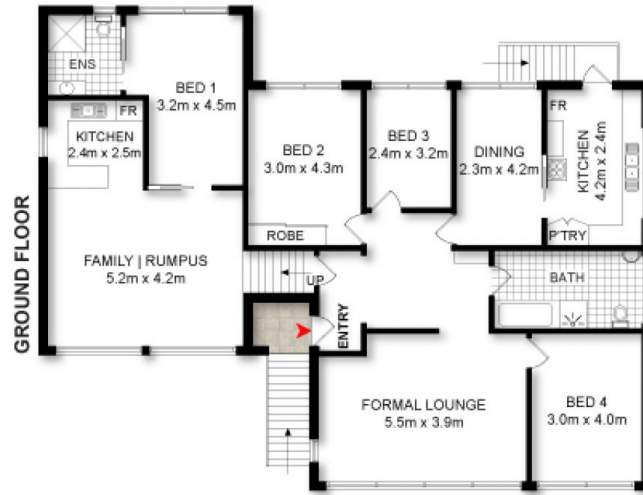
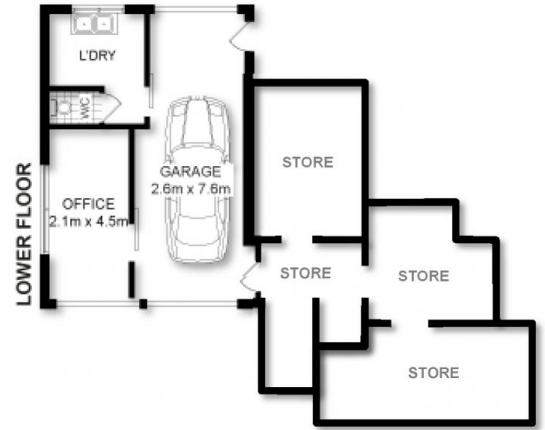
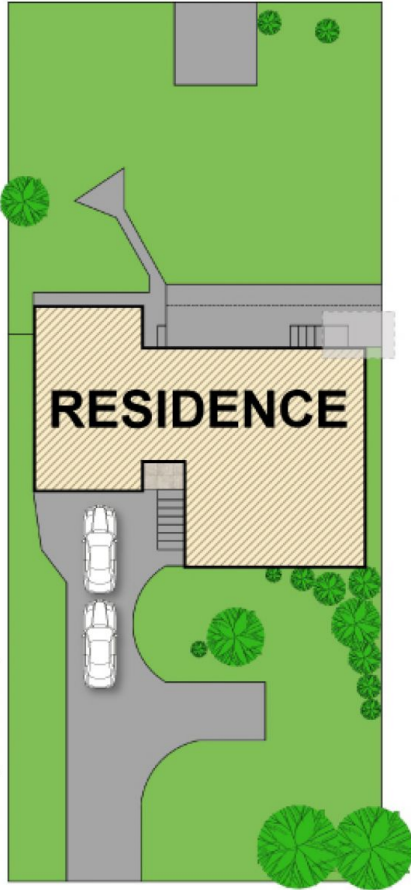
**Type** : House  
**Land Size** : 777.8 sqm  
**View** : <https://www.jreproperty.com.au/sale/nsw/sutherland/gyMEA/residential/house/7488637>



**Luke Jeffree**  
**02 9540 2222**

[For full version visit the website](https://www.jreproperty.com.au)

SITE PLAN (not to scale)



ADDRESS:  
**41 Milburn Road, GYMEA**

0 1m 2m 3m 4m

DISCLAIMER: THIS IS FOR ILLUSTRATIVE PURPOSES ONLY. ALL DIMENSIONS ARE APPROXIMATE AND IT DOES NOT CONSTITUTE PART OF ANY LEGAL DOCUMENTS.