

2/732-734 Kingsway GYMEA NSW

2 **1** **1**

Enter via Premier Street; this impeccably presented 2 bedroom townhouse offers a lifestyle of immense comfort and convenience located in the very heart of Gymea. Entertain your friends this summer as this ideal floorplan will suit those requiring low maintenance and easy entertaining, the perfect setting for a very relaxing lifestyle.

Spacious living and dining area flows to the sunny courtyard

Immaculate kitchen offers an abundance of light and space

Generously proportioned bedrooms both with built-in robes & fans

Delightful sunny paved courtyard with manicured gardens

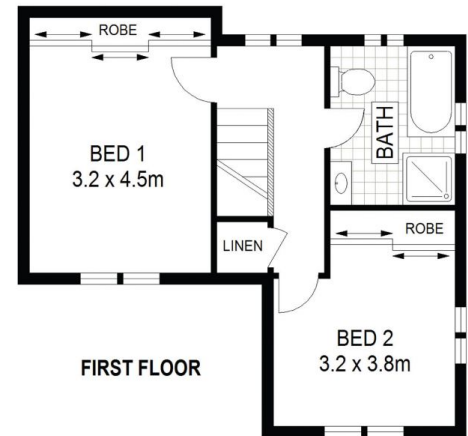
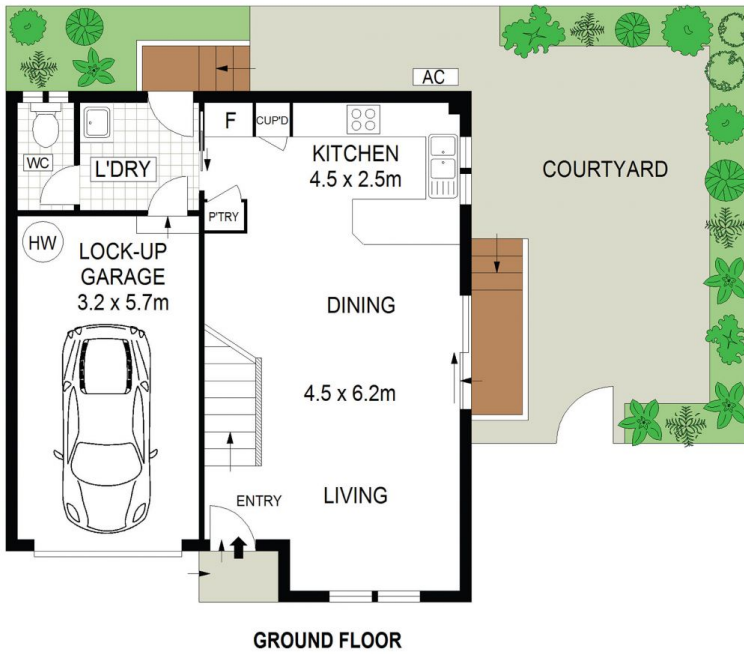
Situated at the rear of a well maintained complex of only 7

[For full version visit the website](https://www.jreproperty.com.au)

Type : Townhouse
Building Size : 150 sqm
View : <https://www.jreproperty.com.au/sale/nsw/sutherland/gymea/residential/townhouse/7488646>



Luke Jeffree
02 9540 2222



ADDRESS :

2/732-734 KINGSWAY, GYMEA



DISCLAIMER: THIS IS FOR ILLUSTRATIVE PURPOSES ONLY. ALL DIMENSIONS ARE APPROXIMATE AND IT DOES NOT CONSTITUTE PART OF ANY LEGAL DOCUMENTS.