



**296 Gymea Bay Road GYMEA BAY NSW**

4 3 3

Renovated to perfection this home embraces an appealing and unexpected substantial residence for an easy and comfortable lifestyle. Peacefully placed in an exclusive bayside community, this family home offers style and class and numerous choices of living spaces including a versatile lower level retreat with ensuite bathroom. Stroll to Gymea Baths, parks & bus.

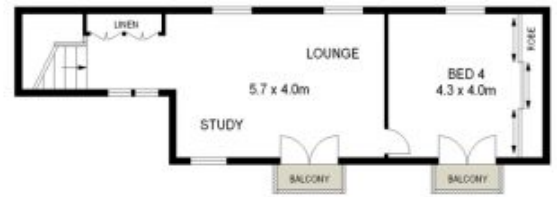
**Type** : House  
**Land Size** : 550.1 sqm  
**View** : <https://www.jreproperty.com.au/sale/nsw/sutherlandland/gymea-bay/residential/house/7488650>

- 4 large bedrooms all with built in wardrobes
- An abundance of living and dining options
- Granite kitchen with dishwasher & plenty of cupboards
- Beautiful easy care north facing grounds
- Undercover timber entertaining alfresco deck
- Renovated bathrooms / Split system air conditioning
- Separate teenage retreat with shower & toilet



**Luke Jeffree**  
02 9540 2222

[For full version visit the website](https://www.jreproperty.com.au)



ADDRESS :  
 296 Gynea Bay Road, GYMEA BAY



DISCLAIMER: THIS IS FOR ILLUSTRATIVE PURPOSES ONLY. ALL DIMENSIONS ARE APPROXIMATE AND IT DOES NOT CONSTITUTE PART OF ANY LEGAL DOCUMENTS.