



46 Tulong Place KIRRAWEE NSW

4 1 2

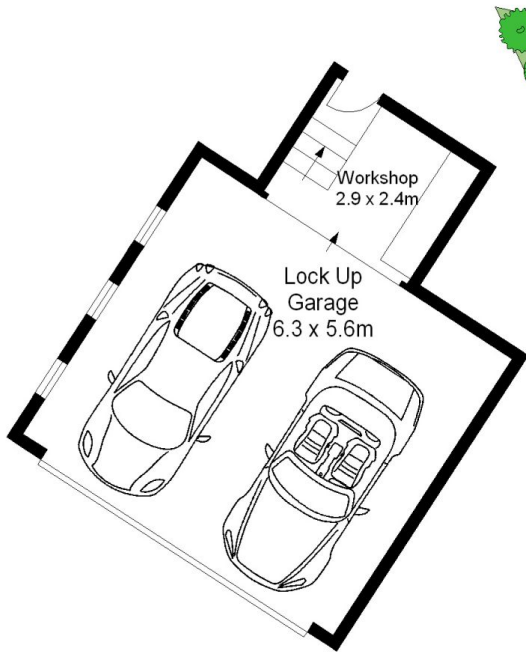
Presiding over its elevated end of cul-de-sac position, this immaculate residence exudes a charismatic presence resulting from its interesting split level design, contemporary appeal and superb easy care lawns and gardens. Displaying an excellent sense of space and proportion, it offers the perfect environment for family living and inspired alfresco dining.

- * Spacious open plan living wrapped in glass
- * Casual dining, alfresco deck, district vistas
- * Private courtyard & large grass area
- * Oversized DLUG, workshop
- * Fireplace, abundant storage, powder room, BIR's

Land Size : 581 sqm
View : <https://www.jreproperty.com.au/sale/nsw/sutherlandland/kirrawee/residential/house/7488652>



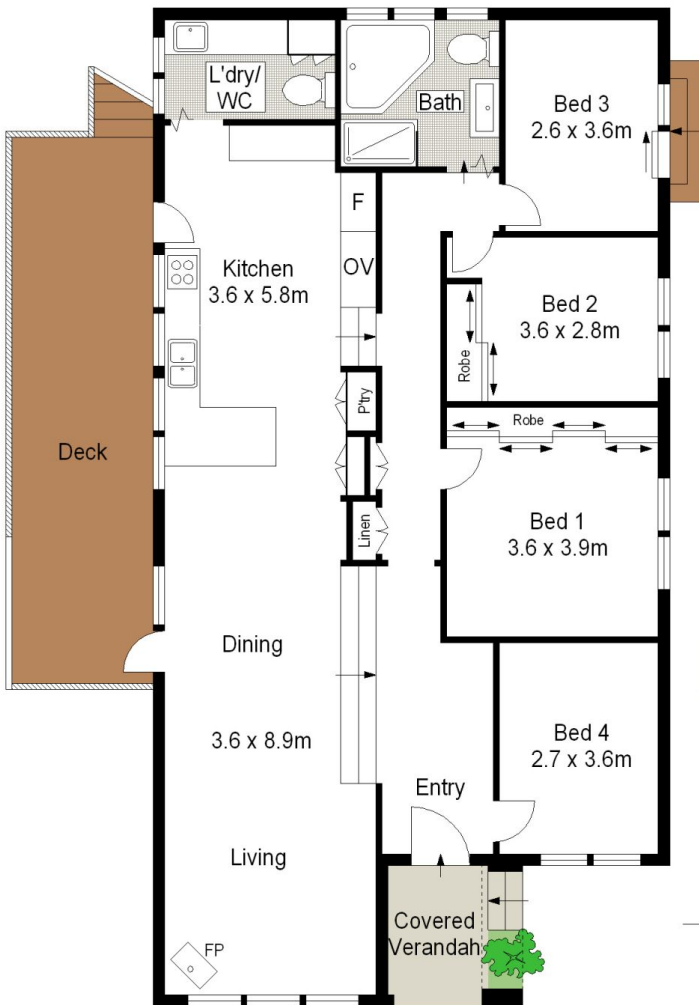
Dion Moon
02 9540 2222



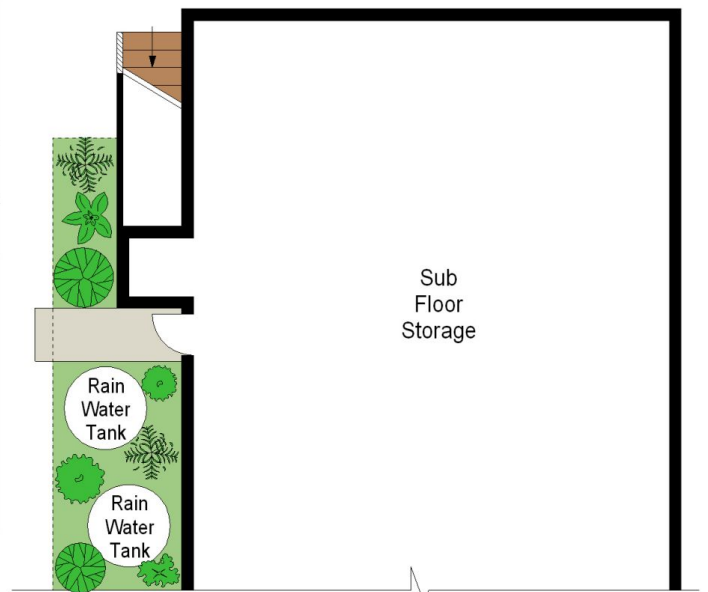
GROUND FLOOR



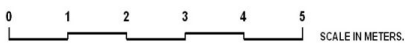
SITE PLAN (NOT TO SCALE)



GROUND FLOOR



LOWER GROUND FLOOR



Scale in metres. Indicative only. Dimensions are approximate. All information contained herein is gathered from sources we believe to be reliable. However we cannot guarantee its accuracy and interested persons should rely on their own enquiries.

46 Tulong Place, Kirrawee