



15 Canberra Road SYLVANIA NSW

3 1 1

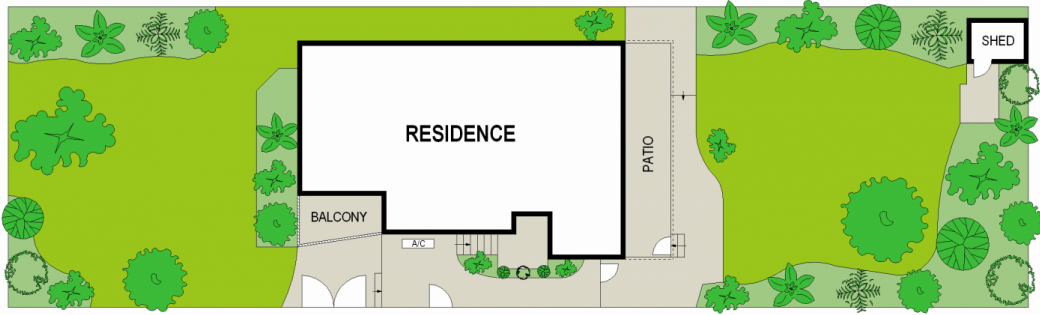
Resting on a 600sqm (approx) corner position flat parcel of land on the high side of the street, this home offers a wealth of choices. Immaculately maintained for approximately 50 years, this peaceful cottage style home presents excellent scope to renovate, extend or rebuild. Situated in the popular area of Sylvania and close to all amenities.

- * 3 generous light filled bedrooms
- * Multiple living areas/ spacious kitchen
- * Single lock up garage / under house storage
- * Undercover entertaining alfresco patio
- * Sunny North facing child and pet friendly yard

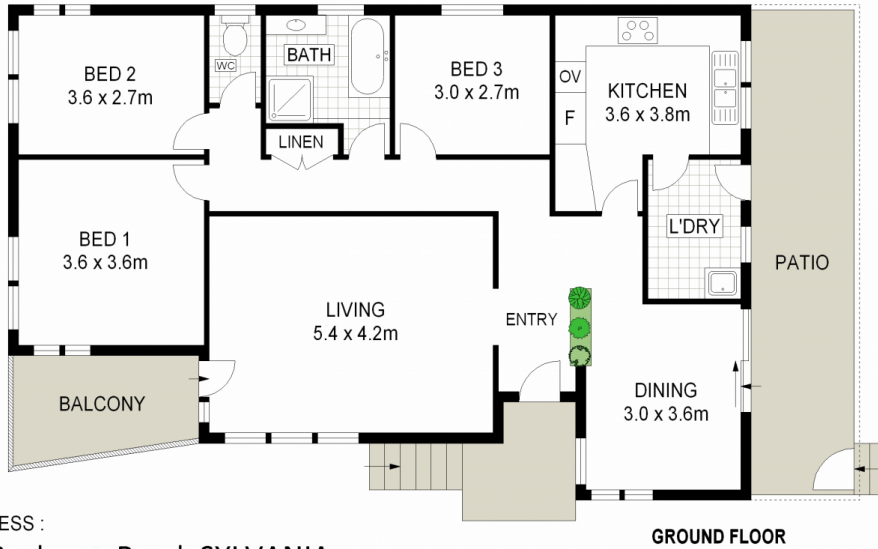
Type : House
Land Size : 600 sqm
View : <https://www.jreproperty.com.au/sale/nsw/sutherland/sylvania/residential/house/7488657>



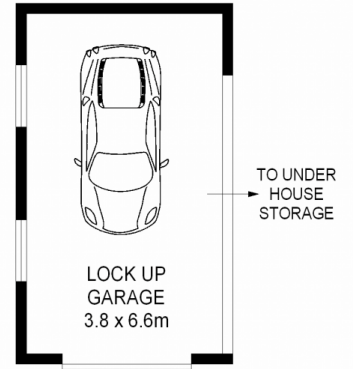
Luke Jeffree
02 9540 2222



SITE PLAN (NOT TO SCALE)



GROUND FLOOR



LOWER GROUND FLOOR



ADDRESS :

15 Canberra Road, SYLVANIA

DISCLAIMER: THIS IS FOR ILLUSTRATIVE PURPOSES ONLY. ALL DIMENSIONS ARE APPROXIMATE AND IT DOES NOT CONSTITUTE PART OF ANY LEGAL DOCUMENTS.