



**4/31 Chapman Street GYMEA NSW**

2 1 2

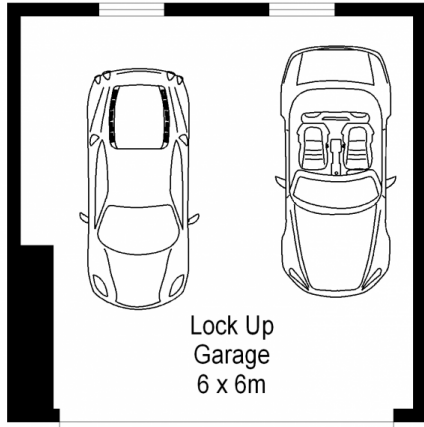
Wonderfully central and convenient, this stylishly appointed and generously proportioned security apartment presents a perfect address for the young executive, downsizer or investor. Light filled and benefiting from an open and leafy aspect, its just steps to the vibrant heart of Gymea village, bus and rail.

**Building Size** : 11 sqm  
**View** : <https://www.jreproperty.com.au/sale/nsw/sutherland/gymea/residential/unit/7488658>

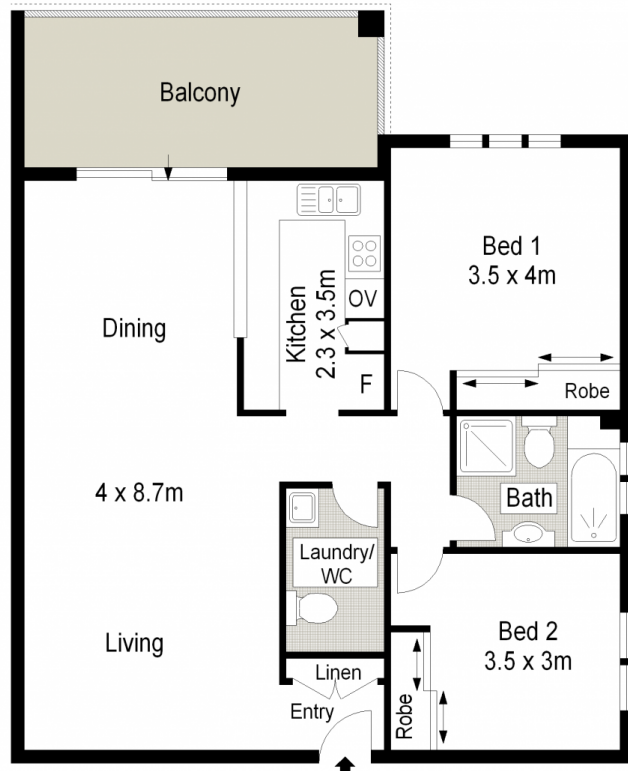
- \* Spacious living & dining area
- \* Alfresco balcony ideal for entertaining
- \* Modern kitchen, laundry with 2nd WC
- \* Generous bedrooms with BIRS
- \* Quality apartment in quiet street setting
- \* Double Lock up garage, intercom



**Dion Moon**  
02 9540 2222



**LOWER GROUND FLOOR**



**GROUND FLOOR**



SCALE IN METERS.

Scale in metres. Indicative only. Dimensions are approximate. All information contained herein is gathered from sources we believe to be reliable. However we cannot guarantee its accuracy and interested persons should rely on their own enquiries.



4/31-33 Chapman Avenue, Gymea