



133 Manchester Road GYMEA NSW

3 2 2

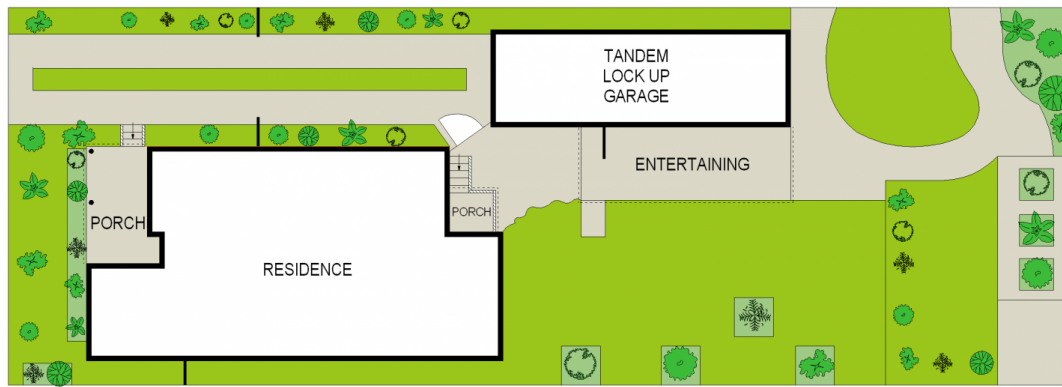
Resting on a level 653.9 sq (approx.) metre block, this family home oozes potential. Light filled and with separate living areas this property is perfect to be able to live in comfortably as is, refurbish or start afresh with a new home. Enjoying an idyllic location, quietly and peacefully set amongst quality properties within close proximity to all the GyMEA has to offer.

- * 3 bedrooms, main bedroom with BIR
- * Light filled separate lounge & dining area
- * Generous additional family room with split system air con
- * Updated kitchen / 2 x bathrooms

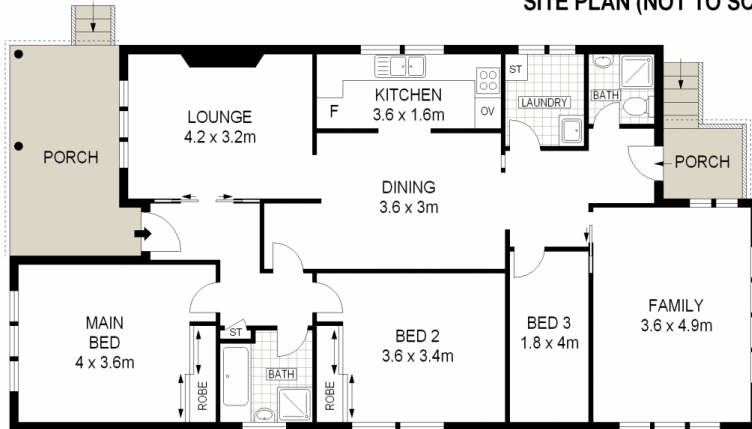
Type : House
Land Size : 653.9 sqm
View : <https://www.jreproperty.com.au/sale/nsw/sutherlandland/gyMEA/residential/house/7488659>



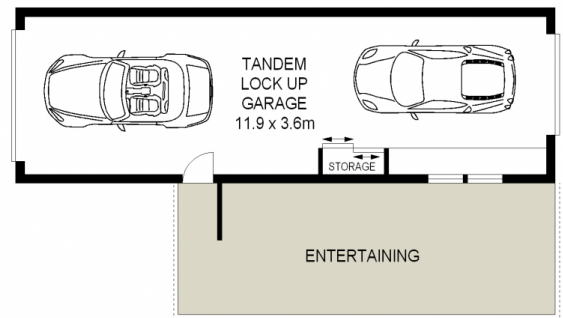
Luke Jeffree
02 9540 2222



SITE PLAN (NOT TO SCALE)



GROUND FLOOR



GROUND FLOOR

ADDRESS :

133 Manchester Road, GYMEA



DISCLAIMER: THIS IS FOR ILLUSTRATIVE PURPOSES ONLY. ALL DIMENSIONS ARE APPROXIMATE AND IT DOES NOT CONSTITUTE PART OF ANY LEGAL DOCUMENTS.