



**256 President Avenue MIRANDA NSW**

**3** **1**

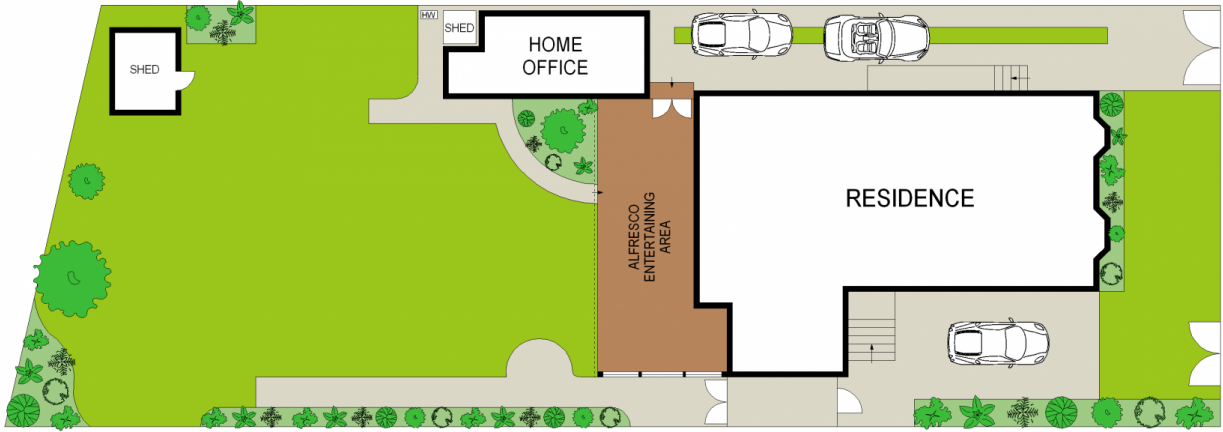
Offering light filled living areas with double glazed windows and wide polished floorboards this property is ready for you to move straight in. Updated over the years to suit the needs of a growing family, the home sits on a level 632 sqm block and boasts a substantial private rear yard offering the ability to enjoy as is or future potential to upgrade or expand.

- \* 3 generous light filled bedrooms
- \* Slow combustion fire place & split system A/C
- \* Huge undercover timber alfresco deck
- \* Separate access home office with all connections
- \* Gated off street parking for up to 4 cars
- \* Close proximity to Miranda Westfield, bus and rail

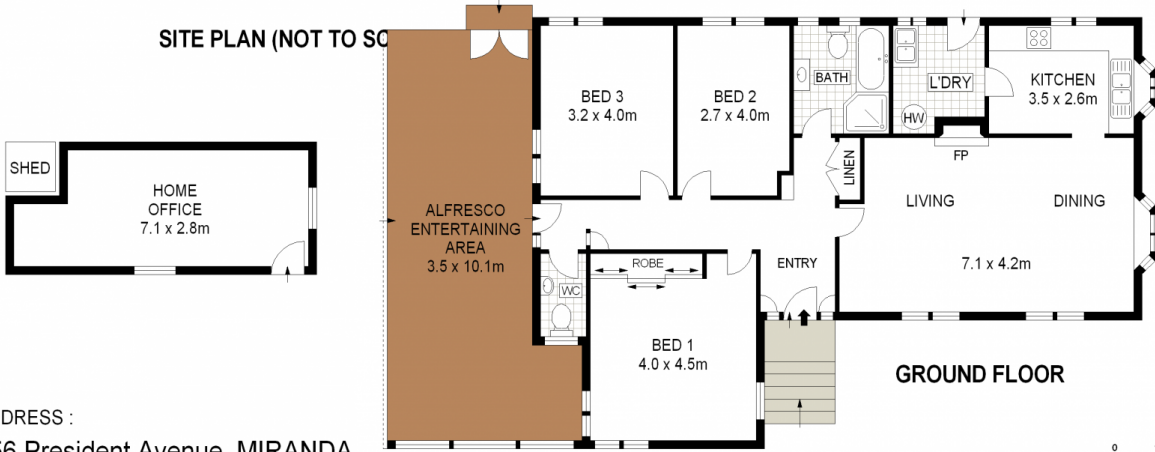
**Type** : House  
**Land Size** : 632 sqm  
**View** : <https://www.jreproperty.com.au/sale/nsw/sutherlandland/miranda/residential/house/7488660>



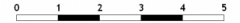
**Luke Jeffree**  
02 9540 2222



SITE PLAN (NOT TO SCALE)



GROUND FLOOR



ADDRESS :  
256 President Avenue, MIRANDA

DISCLAIMER: THIS IS FOR ILLUSTRATIVE PURPOSES ONLY. ALL DIMENSIONS ARE APPROXIMATE AND IT DOES NOT CONSTITUTE PART OF ANY LEGAL DOCUMENTS.