



**13/50 Talara Road GYMEA NSW**

2 1 1

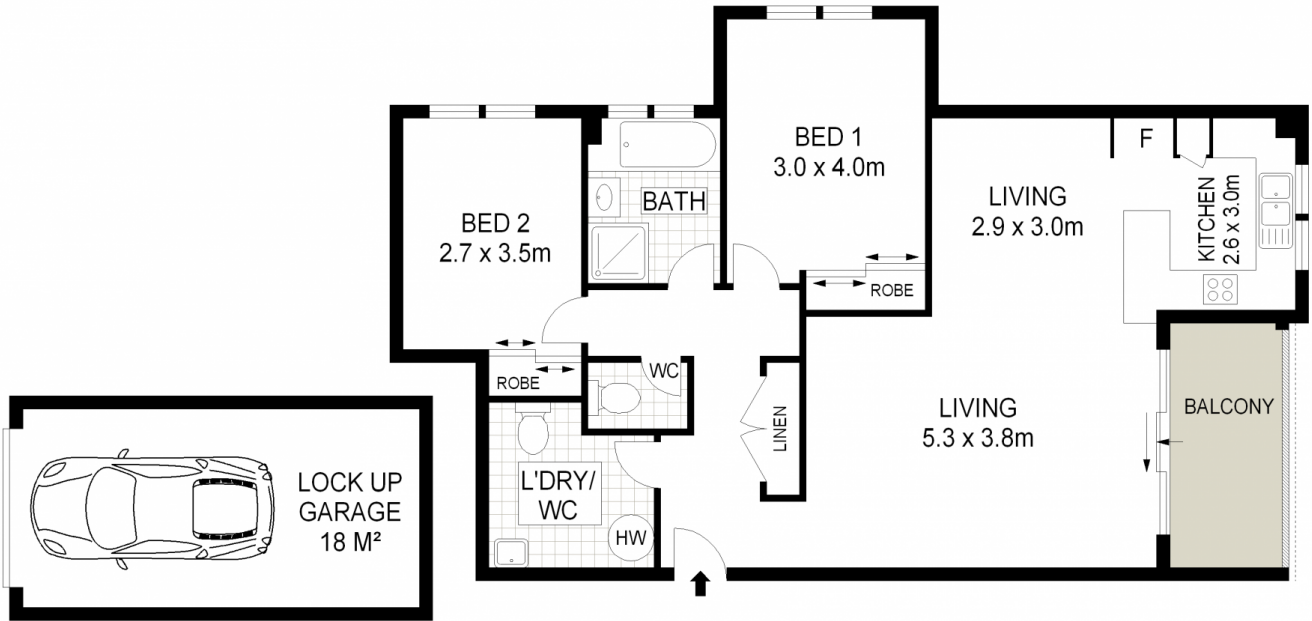
Enjoying a leafy and peaceful setting on the ground floor of a modern security complex, this generously sized two bedroom apartment will appeal to investors and first home owner buyers. Resting in a no through street, this apartment is exceptionally well located with an easy stroll to GyMEA Village, rail, bus & local schools.

- \* 2 bedrooms both with built in wardrobes
- \* Generous lounge/dining with floating floorboards
- \* Substantial kitchen with breakfast bar
- \* Internal laundry with 2nd W.C
- \* Private west facing alfresco balcony
- \* Single lock up garage / security complex

**Type** : Unit  
**Building Size** : 12 sqm  
**View** : <https://www.jreproperty.com.au/sale/nsw/sutherland/gyMEA/residential/unit/74886>  
 86



**Luke Jeffree**  
02 9540 2222



LOWER GROUND FLOOR

GROUND FLOOR



ADDRESS :

13/50 Talara Road, GYMEA



DISCLAIMER: THIS IS FOR ILLUSTRATIVE PURPOSES ONLY. ALL DIMENSIONS ARE APPROXIMATE AND IT DOES NOT CONSTITUTE PART OF ANY LEGAL DOCUMENTS.