



22 Darryl Place GYMEA BAY NSW

5 3 2

Nestled by tranquil bushland reserve and located idyllically in a peaceful, highly sought after child friendly street this substantial family residence features a series of superb living spaces and stylish extras designed to accommodate a relaxed lifestyle.

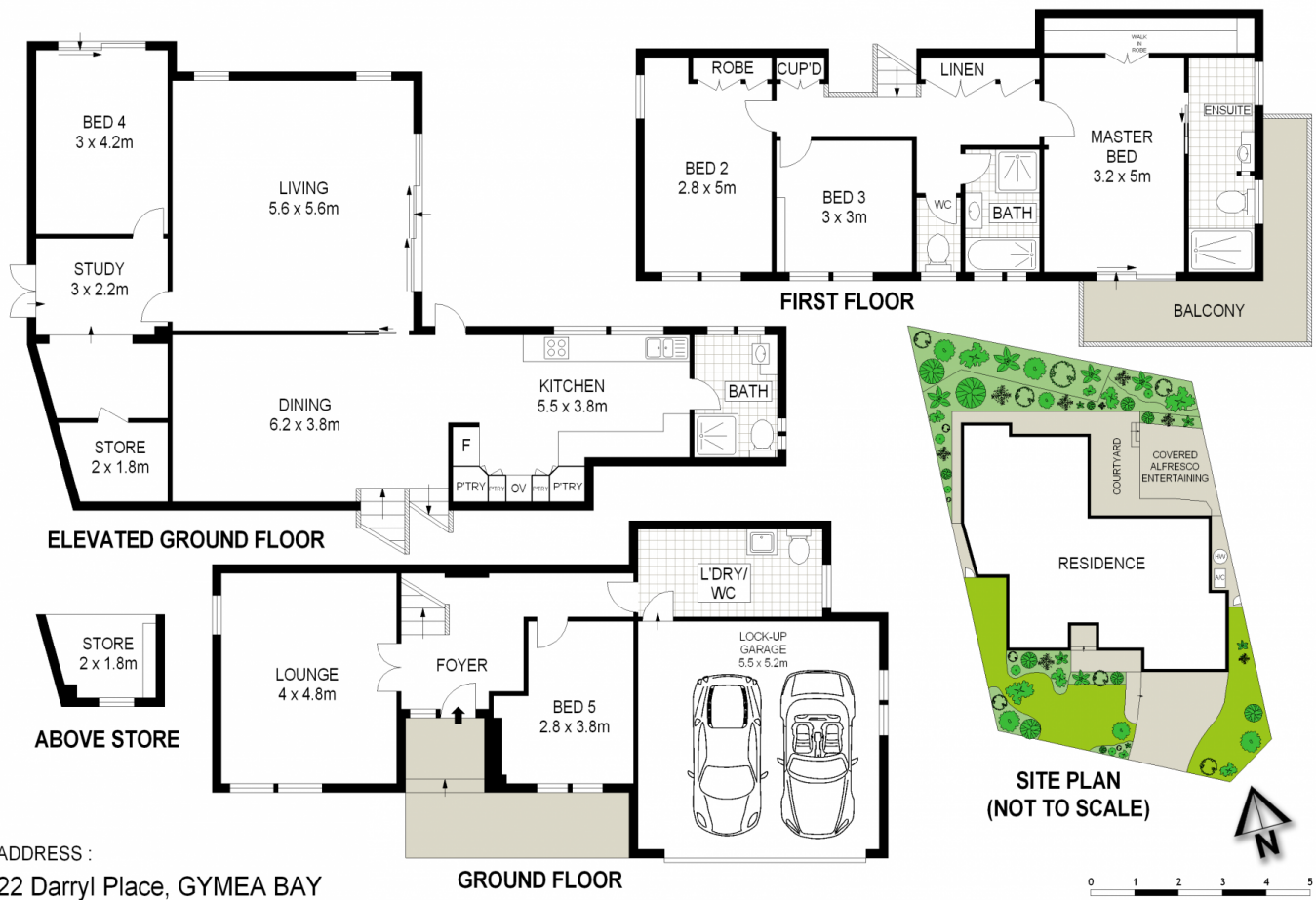
- * Elegant formal dining & spacious living areas
- * Expansive family rumpus / Modern kitchen, plenty of cupboards
- * Entertaining alfresco area with low maintenance gardens
- * 5 bedrooms with additional study area and plenty of storage
- * Master bedroom retreat with ensuite and walk in wardrobe
- * Double lock up garage with internal access
- * Superb family living close to school, bay & shops

[For full version visit the website](https://www.jreproperty.com.au/sale/nsw/sutherland/gymea-bay/residential/house/7488687)

Type : House
Land Size : 556 sqm
View : <https://www.jreproperty.com.au/sale/nsw/sutherland/gymea-bay/residential/house/7488687>



Luke Jeffree
02 9540 2222



ADDRESS :

22 Darryl Place, GYMEA BAY

DISCLAIMER: THIS IS FOR ILLUSTRATIVE PURPOSES ONLY. ALL DIMENSIONS ARE APPROXIMATE AND IT DOES NOT CONSTITUTE PART OF ANY LEGAL DOCUMENTS.