



**7/22-28 Premier Street GYMEA NSW**

2 2 2

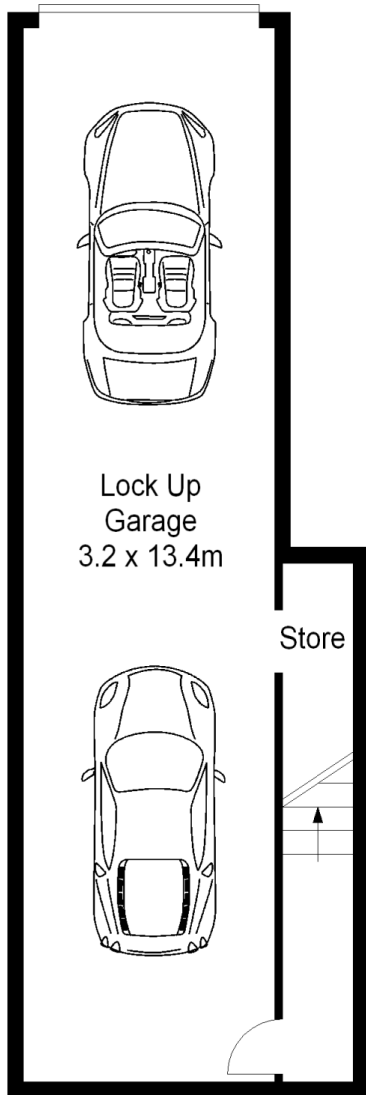
A lush, leafy setting in a beautifully maintained boutique complex adds tremendous appeal to this secure, immaculately presented tri-level townhouse, perfectly positioned just a few minutes stroll from Gymea station and vibrant village living. Peacefully placed with its own street frontage, its interiors are appointed with quality contemporary fittings and embrace an idyllic flow to a private outdoor entertaining setting.

- \* Open plan living/dining/kitchen with timber floors
- \* Alfresco courtyard, great for entertaining
- \* Stone-topped kitchen, gas cooktop & dishwasher
- \* Sun-bright upstairs bedrooms, master with ensuite
- \* Fully tiled bathrooms, separate laundry and w/c
- \* Internal access to oversized DLUG + storage
- \* Short stroll to primary schools, restaurants & cafes

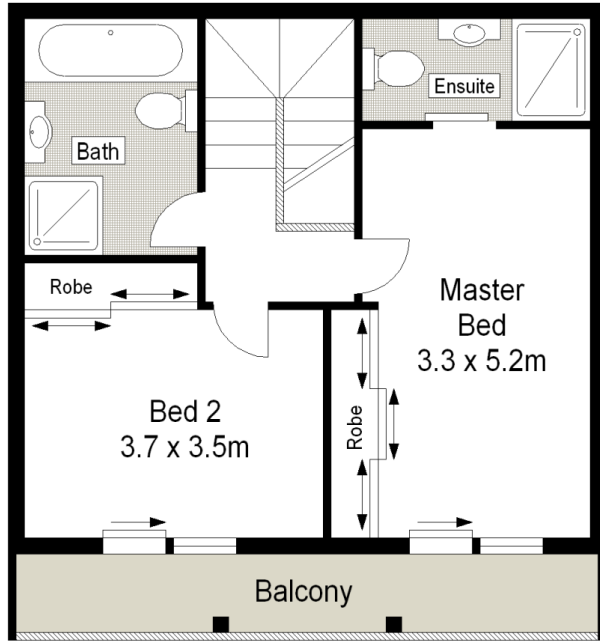
**Building Size** : 21 sqm  
**Land Size** : 191 sqm  
**View** : <https://www.jreproperty.com.au/sale/nsw/sutherland/gymea/residential/townhouse/7488689>



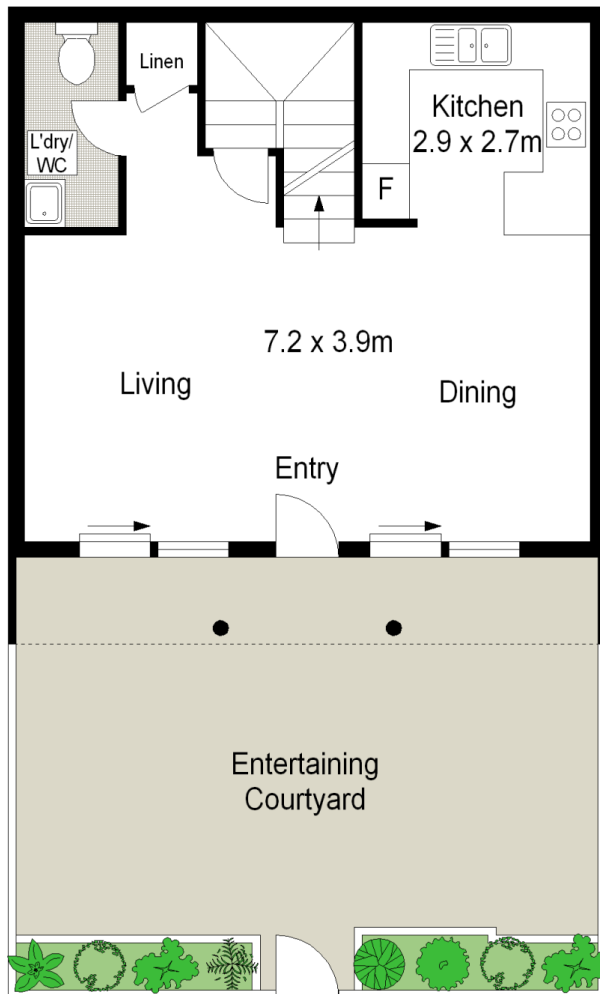
**Dion Moon**  
02 9540 2222



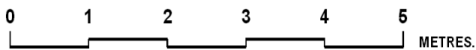
**BASEMENT**



**FIRST FLOOR**



**GROUND FLOOR**



Scale in metres. Indicative only. Dimensions are approximate. All information contained herein is gathered from sources we believe to be reliable. However we cannot guarantee its accuracy and interested persons should rely on their own enquiries.

7/22 Premier Street, Gymea

