

14 Darryl Place GYMEA BAY NSW

4 3 1

The picturesque outlook amongst the tree tops yet conveniently located to modern day conveniences. This terrific split level family friendly home is super private as a result of the elevated positioning. Enjoying easy care living & tastefully updated kitchen & bathroom. Boasting a great floor perfectly suited to a very broad target audience including extended families looking for more separate spaces.

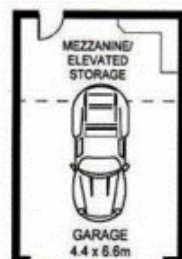
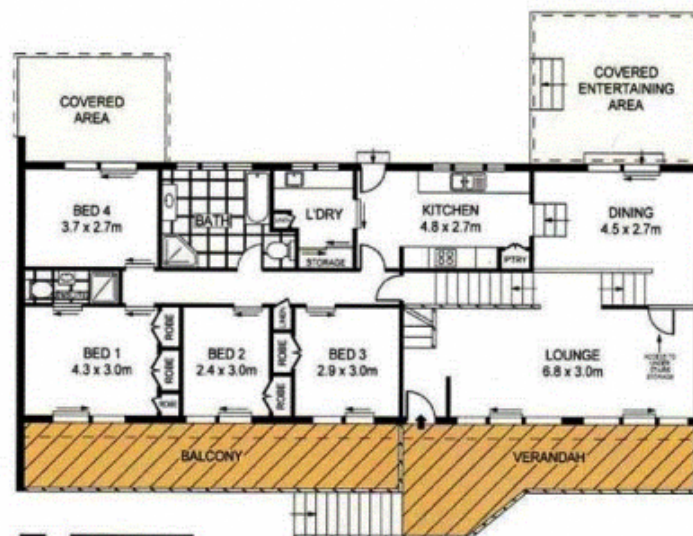
- * 4 light-filled, airy bedrooms, master with ensuite
- * High raked ceilings, quality fixtures & fittings
- * Separate living & dining areas, flow to outdoor entertaining
- * Renovated 2-year-old kitchen, SMEG app, stone benchtops

[For full version visit the website](https://www.jreproperty.com.au)

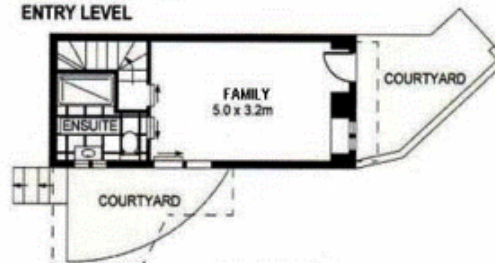
Type : House
Land Size : 676.6 sqm
View : <https://www.jreproperty.com.au/sale/nsw/sutherland/gymea-bay/residential/house/7488697>



Luke Jeffree
02 9540 2222



ENTRY LEVEL



LOWER LEVEL



SCALE (METRES)

PLANS SHOWN ONLY INDICATIVE OF LAYOUT. DIMENSIONS ARE APPROXIMATE.
Ref. No: 35938



14 DARRYL PLACE

GYMEA BAY