



5/15-17 Koorabel Avenue GYMEA NSW

2 1 1

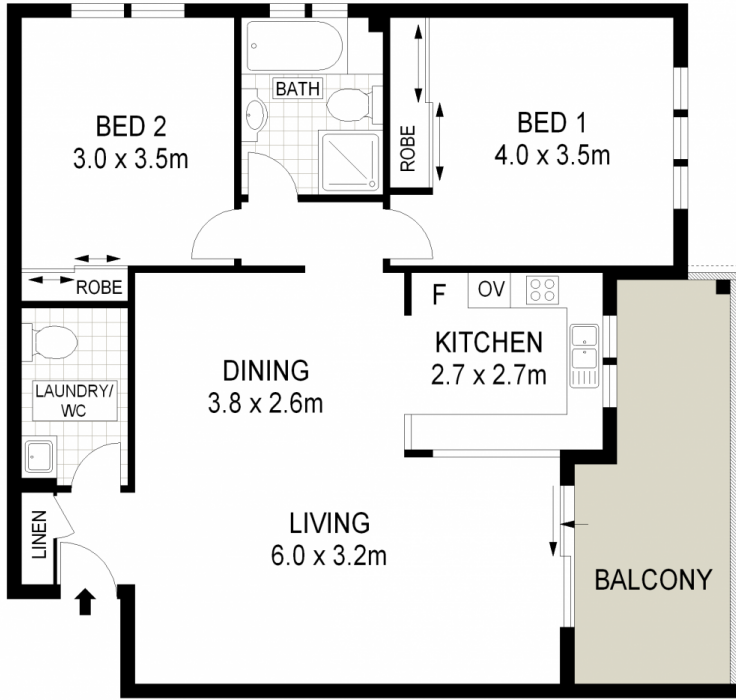
Remarkable in its proportions, this beautifully presented first floor apartment provides appeal ideal for those looking for an easy care lifestyle with an abundance of space. Resting in a modern and small security complex, its lifestyle benefits are exceptional, offering peace and privacy just a quick stroll to Gymea village & transport.

- * Large kitchen, quality appliances, plenty of space
- * Both bedrooms with built in wardrobes
- * Sun-drenched west facing balcony
- * Single lock up garage / internal laundry

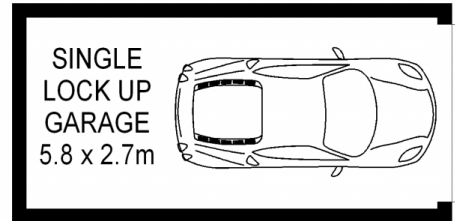
Type : Unit
Building Size : 12 sqm
View : <https://www.jreproperty.com.au/sale/nsw/sutherland/gymea/residential/unit/7488699>



Luke Jeffree
02 9540 2222



FIRST FLOOR



GROUND FLOOR



ADDRESS :

5/15 Koorabel Avenue, GYMEA

DISCLAIMER: THIS IS FOR ILLUSTRATIVE PURPOSES ONLY. ALL DIMENSIONS ARE APPROXIMATE AND IT DOES NOT CONSTITUTE PART OF ANY LEGAL DOCUMENTS.