



### 10/15 Hotham Road GYMEA NSW

3 2 3

Set well apart from its peers, this fresh and contemporary residence provides a spectacular easy care environment offering wide appeal for executives, downsizers and families. This 3-bedroom townhouse is substantial throughout with its light filled and free flowing interiors showcasing a spacious lounge. Promising a lifestyle of premium comfort, the townhouse is only a short stroll to GyMEA train station, schools and cafe's.

- \* Open plan living / ducted reverse cycle air throughout
- \* Caesarstone kitchen with gas cooking & dishwasher
- \* Large bedrooms all with BIRs, master with ensuite
- \* Fantastic storage / modern bathrooms / security complex
- \* 2 x substantial sunny courtyards / storage room
- \* Remote control triple lock garage with internal access

[For full version visit the website](https://www.jreproperty.com.au/sale/nsw/sutherland/gyMEA/residential/townhouse/7488706)

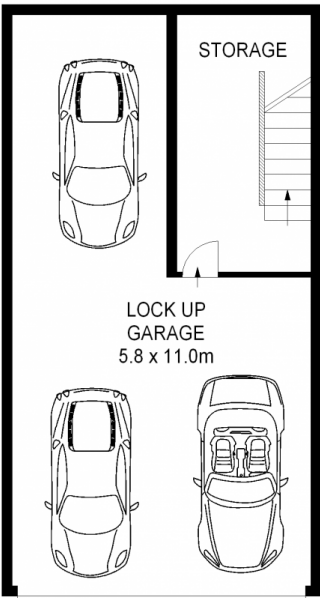
**Type** : Townhouse  
**Building Size** : 26 sqm  
**View** : <https://www.jreproperty.com.au/sale/nsw/sutherland/gyMEA/residential/townhouse/7488706>



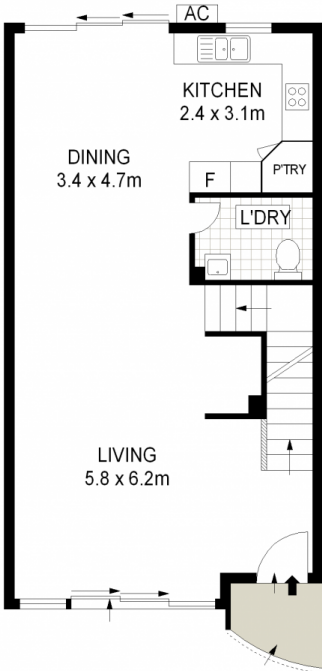
**Luke Jeffree**  
02 9540 2222



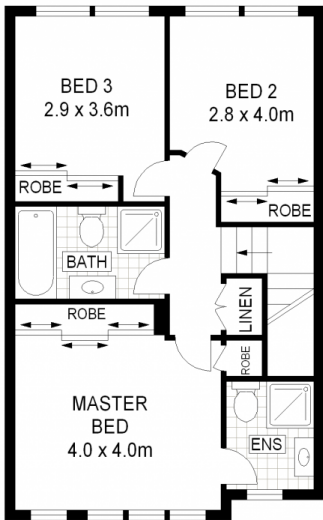
SITE PLAN (NOT TO SCALE)



UNDER GROUND LEVEL



GROUND LEVEL



FIRST LEVEL

ADDRESS :  
10/15 Hotham Road, GYMEA



DISCLAIMER: THIS IS FOR ILLUSTRATIVE PURPOSES ONLY. ALL DIMENSIONS ARE APPROXIMATE AND IT DOES NOT CONSTITUTE PART OF ANY LEGAL DOCUMENTS.