

18 Carter Crescent GYMEA BAY NSW

5 2 2

This substantial residence is set over two spacious levels with focus on comfort and space whilst created to provide effortless year round living and entertaining. Proudly sitting in one of the area's most popular cul-de-sac streets with easy access to schools, Gymea village, bus and rail and within Kirrawee High Catchment area.

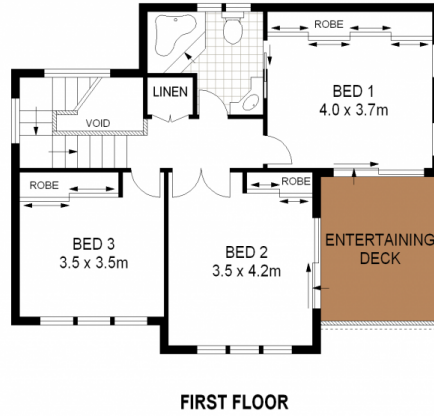
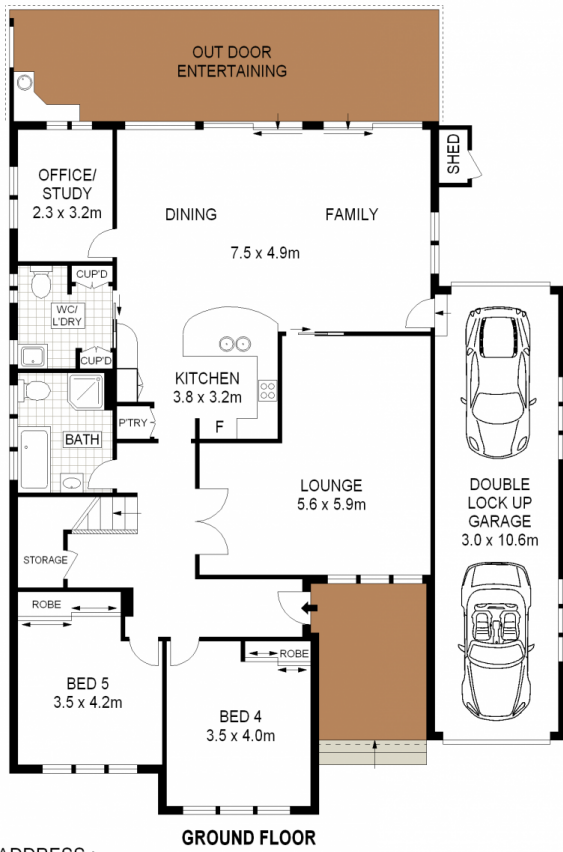
- * Free flowing and light filled living and dining areas
- * Superb kitchen with breakfast bar & plenty of cupboards
- * Undercover alfresco area, child friendly + private grounds
- * 5 generous bedrooms all with BIR's + study or 6th bedroom
- * In-ground solar heated pool, ducted air-con, plenty of storage
- * Tandem lock up garage with drive through access to yard

[For full version visit the website](https://www.jreproperty.com.au)

Type : House
Land Size : 575 sqm
View : <https://www.jreproperty.com.au/sale/nsw/sutherland/gymea-bay/residential/house/7488708>



Luke Jeffree
02 9540 2222



ADDRESS :
18 Carter crescent, GYMEA BAY



DISCLAIMER: THIS IS FOR ILLUSTRATIVE PURPOSES ONLY. ALL DIMENSIONS ARE APPROXIMATE AND IT DOES NOT CONSTITUTE PART OF ANY LEGAL DOCUMENTS.