



9 June Place GYMEA BAY NSW

3 1 1

Set in a sought after street in the highly appealing area of Gymea Bay and customised for ease of everyday living rests this home that showcases a clever single floor plan with easy care attributes. Sitting on a large level parcel of land approx. 803sqm with a sunny North facing aspect backyard, this home will surely please.

Type : House
Land Size : 803 sqm
View : <https://www.jreproperty.com.au/sale/nsw/sutherlandland/gymea-bay/residential/house/7488718>

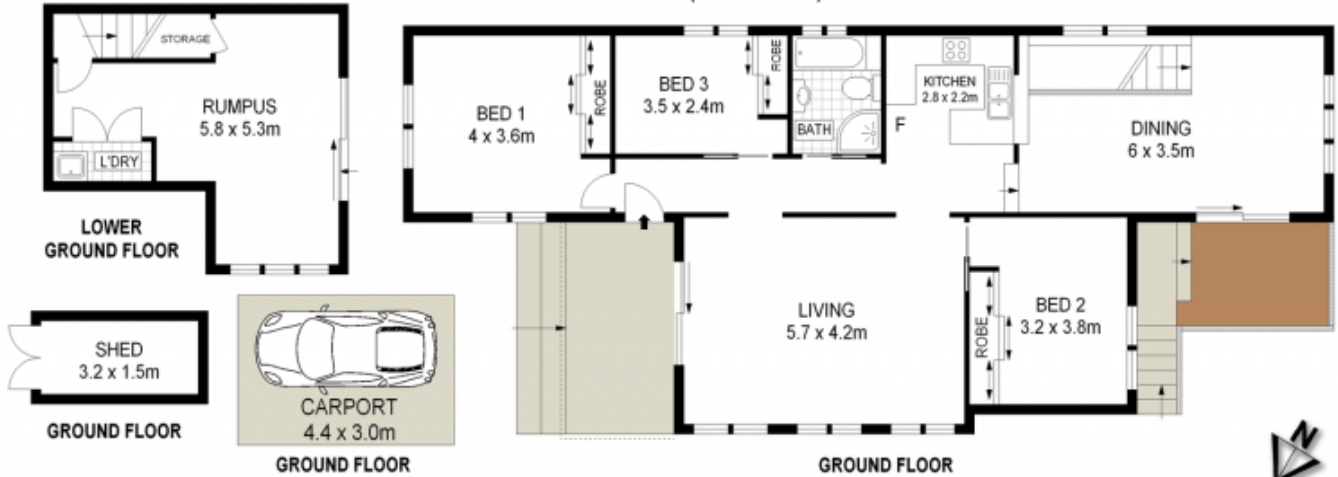
- * Potential duplex site (STCA) 15.24m x 52.73m
- * Large level 803sqm block of land with North facing aspect
- * 3 bedrooms all with built in wardrobes / floorboards
- * Separate formal and casual living areas + rumpus room
- * Large in-ground solar heated pool / sunny grassed yard
- * Popular pocket of Gymea Bay / Kirrawee High catchment area



Luke Jeffree
02 9540 2222



SITE PLAN (NOT TO SCALE)



ADDRESS :

9 June Place, GYMEA BAY

DISCLAIMER: THIS IS FOR ILLUSTRATIVE PURPOSES ONLY. ALL DIMENSIONS ARE APPROXIMATE AND IT DOES NOT CONSTITUTE PART OF ANY LEGAL DOCUMENTS.

