



## 22 Birch Place KIRRAWEE NSW

3 2 3

Superbly presented, this solid single level home delivers a stylish yet practical floor plan, deceptively spacious and complimented by inviting outdoor spaces and a pool. Immaculately presented with fresh and bright interiors it benefits with a convenient cul-de-sac location.

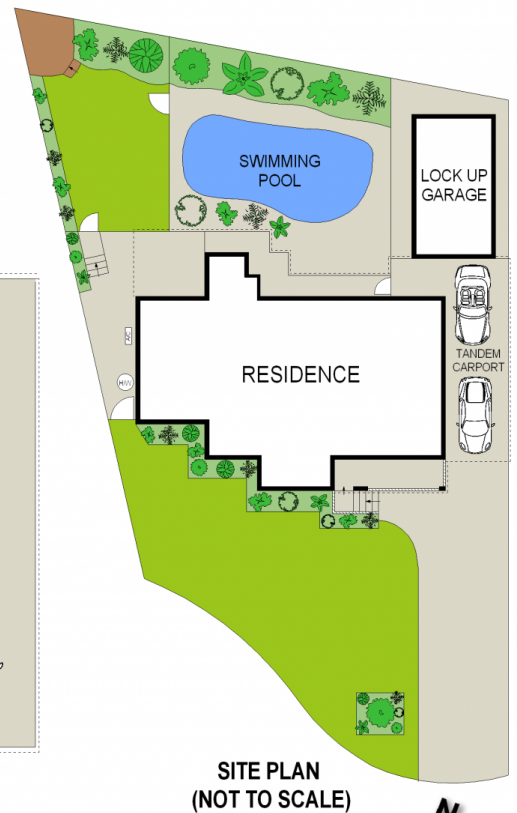
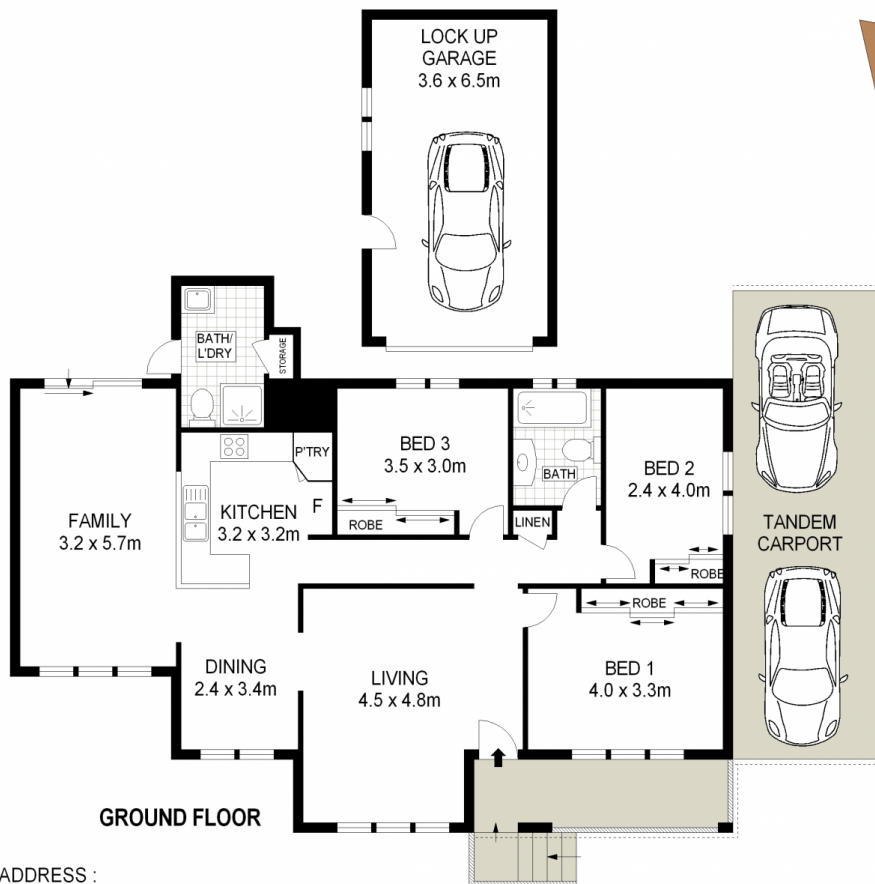
- \* Rendered exterior, generous front terrace / single level
- \* New carpet, spacious lounge and dining areas / tiled floors
- \* Light family living area, gas outlets, split system a/c
- \* 3 generous bedrooms all with ceiling fans and BIR
- \* Manicured landscaped grounds, large in-ground pool
- \* Double carport + a single lock up garage
- \* Quiet cul- de- sac location in a popular pocket of Kirrawee

**Type** : House

**View** : <https://www.jreproperty.com.au/sale/nsw/sutherland/kirrawee/residential/house/7488720>



**Luke Jeffree**  
02 9540 2222



ADDRESS :

22 Birch Place, KIRRAWEE

DISCLAIMER: THIS IS FOR ILLUSTRATIVE PURPOSES ONLY. ALL DIMENSIONS ARE APPROXIMATE AND IT DOES NOT CONSTITUTE PART OF ANY LEGAL DOCUMENTS.