



**6/694-698 Kingsway GYMEA NSW**

2 2 2

This modern and stylish townhouse provides the ultimate in easy care living, placed in a boutique setting. Soak up the sunshine and enjoy the north facing alfresco terrace and be spoilt with convenience with only a short stroll to your choice of either Gymea village or Westfield Miranda.

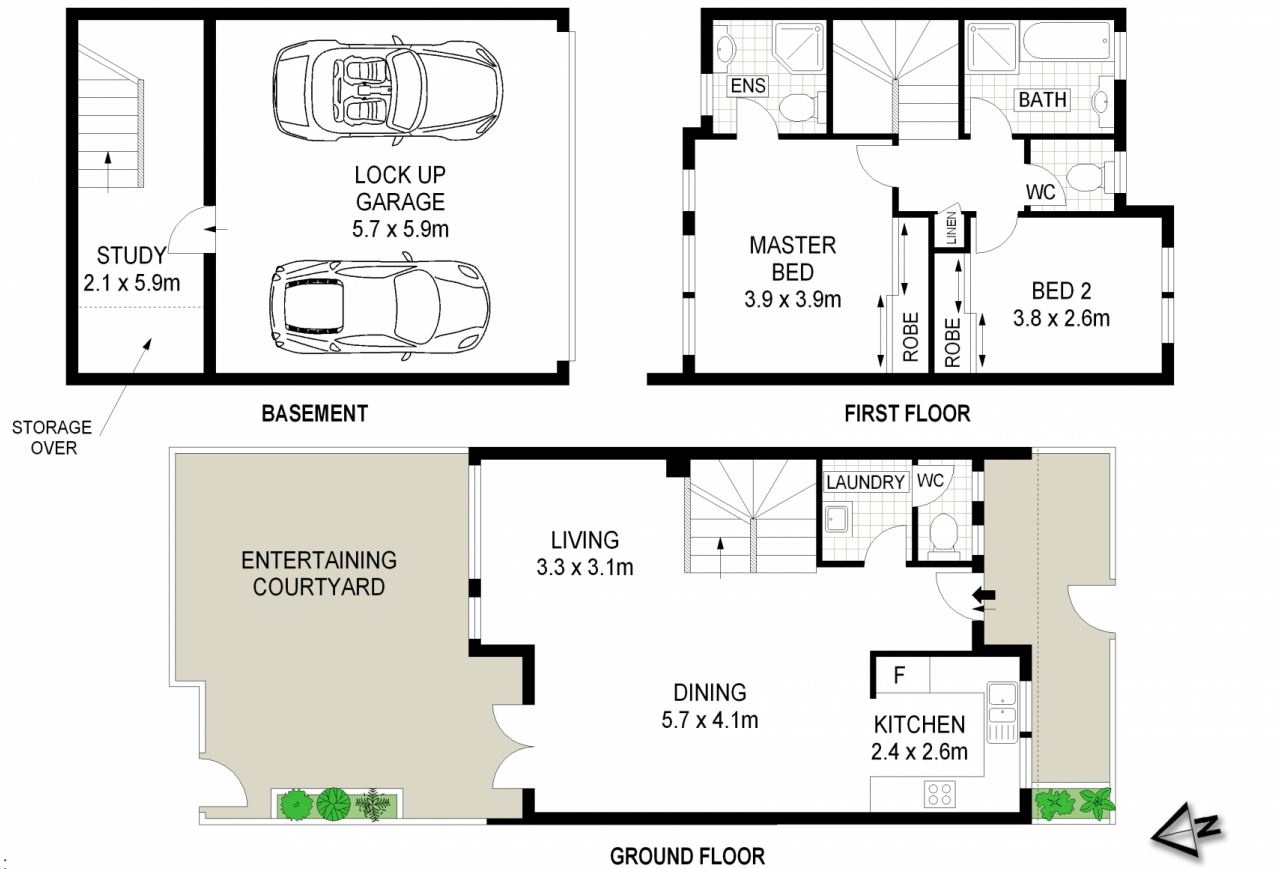
- \* Light filled and generous open plan living and dining with A/C
- \* Kitchen with gas cook top, stone benches & dishwasher
- \* Two large bedrooms, both with built in wardrobes
- \* Master bedroom with ensuite and split system A/C
- \* 2 x sunny courtyards with 1 with travertine tiles
- \* Additional storage area / study space
- \* Internal laundry with 3rd W/C
- \* Remote double lock up garage with internal access

[For full version visit the website](https://www.jreproperty.com.au)

**Type** : Unit  
**Land Size** : 173 sqm  
**View** : <https://www.jreproperty.com.au/sale/nsw/sutherlandland/gymea/residential/unit/7488721>



**Luke Jeffree**  
02 9540 2222



ADDRESS :  
6/694 Kingsway, GYMEA

DISCLAIMER: THIS IS FOR ILLUSTRATIVE PURPOSES ONLY. ALL DIMENSIONS ARE APPROXIMATE AND IT DOES NOT CONSTITUTE PART OF ANY LEGAL DOCUMENTS.