

4 Endeavour Street SANS SOUCI NSW

3 2 1

Enjoying a terrific position surrounded by cafes restaurants & waterways this duplex screams an abundance of potential and is ready to move straight into whilst considering your future improvements. Super convenient location is in great proximity for anyone looking to travel into the city. Large single lock up garage is one of the many feature that complete this terrific offering for either owner occupiers or investors.

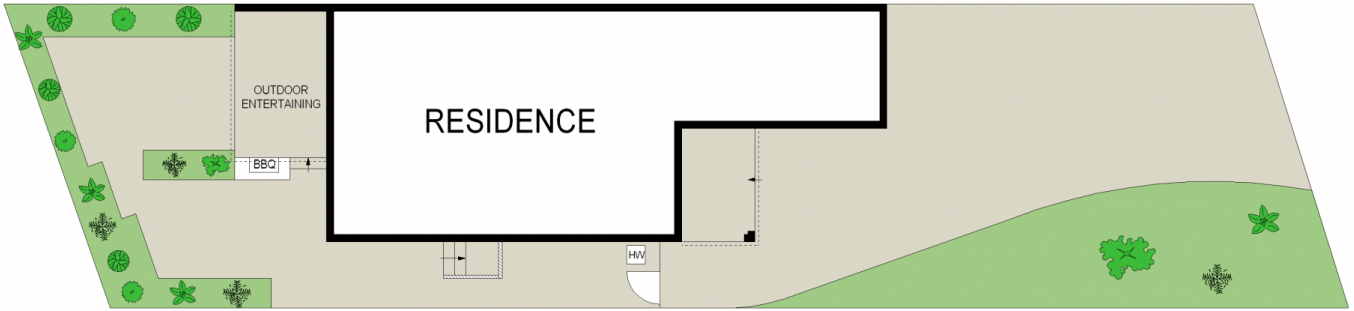
- * Oversize floor plan with bright and generous living areas
- * 3 generous sized bedrooms all with built in wardrobes
- * Master retreat with ensuite and built in wardrobe
- * Sunny paved low maintenance private courtyard with patio
- * Large kitchen area with plenty of cupboards & breakfast

Type : Townhouse
Land Size : 323.32 sqm
View : <https://www.jreproperty.com.au/sale/nsw/st-george/sans-souci/residential/townhouse/7488724>

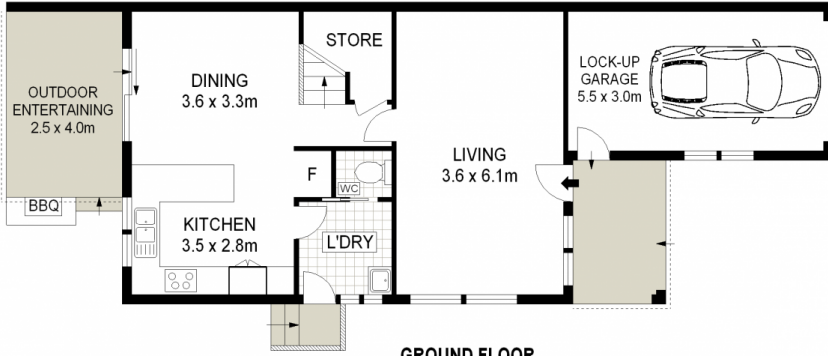


Luke Jeffree
02 9540 2222

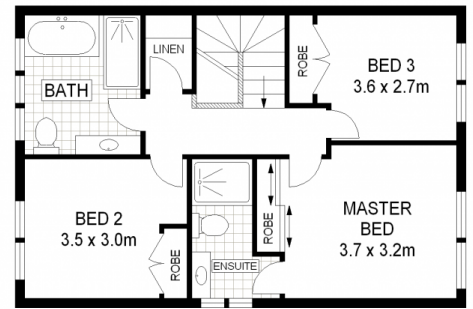
[For full version visit the website](https://www.jreproperty.com.au)



SITE PLAN (NOT TO SCALE)



GROUND FLOOR



FIRST FLOOR

ADDRESS :

4 Endeavour Street, SANS SOUCI



DISCLAIMER: THIS IS FOR ILLUSTRATIVE PURPOSES ONLY. ALL DIMENSIONS ARE APPROXIMATE AND IT DOES NOT CONSTITUTE PART OF ANY LEGAL DOCUMENTS.