



9 Blue Gum Avenue GYMEA BAY NSW

4 3 2

Ideally situated at the end of a quiet cul-de-sac location, this beautifully located two storey home is ideally positioned on a flat block in a tightly held street in Gymea Bay. This property will suit a growing family or could perfectly suit in-law accommodation or guests with the self-contained nature of downstairs. All this is quietly positioned and yet only a short walk from bustling Gymea village, popular schools and train station.

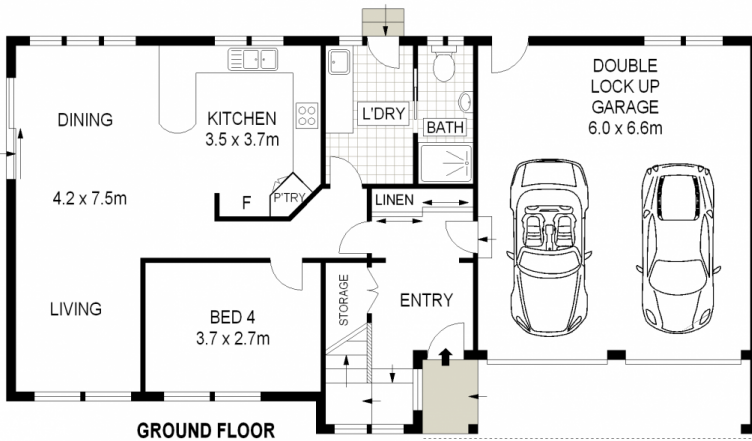
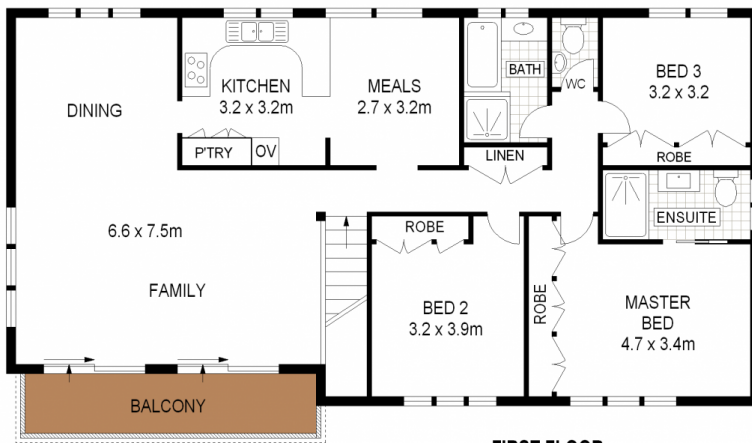
Type : House
Land Size : 630 sqm
View : <https://www.jreproperty.com.au/sale/nsw/sutherland/gymea-bay/residential/house/7488726>

- * Bright and spacious lounge and dining areas
- * Multiple living areas, both upstairs and downstairs
- * 4 generous bedrooms with built in wardrobes
- * Large master bedroom with ensuite
- * Ducted air conditioning upstairs & split system downstairs

[For full version visit the website](https://www.jreproperty.com.au)



Luke Jeffree
02 9540 2222



ADDRESS :

9 Blue Gum Avenue, GYMEA BAY

DISCLAIMER: THIS IS FOR ILLUSTRATIVE PURPOSES ONLY. ALL DIMENSIONS ARE APPROXIMATE AND IT DOES NOT CONSTITUTE PART OF ANY LEGAL DOCUMENTS.

