



4/776 Kingsway GYMEA NSW

2 1 1

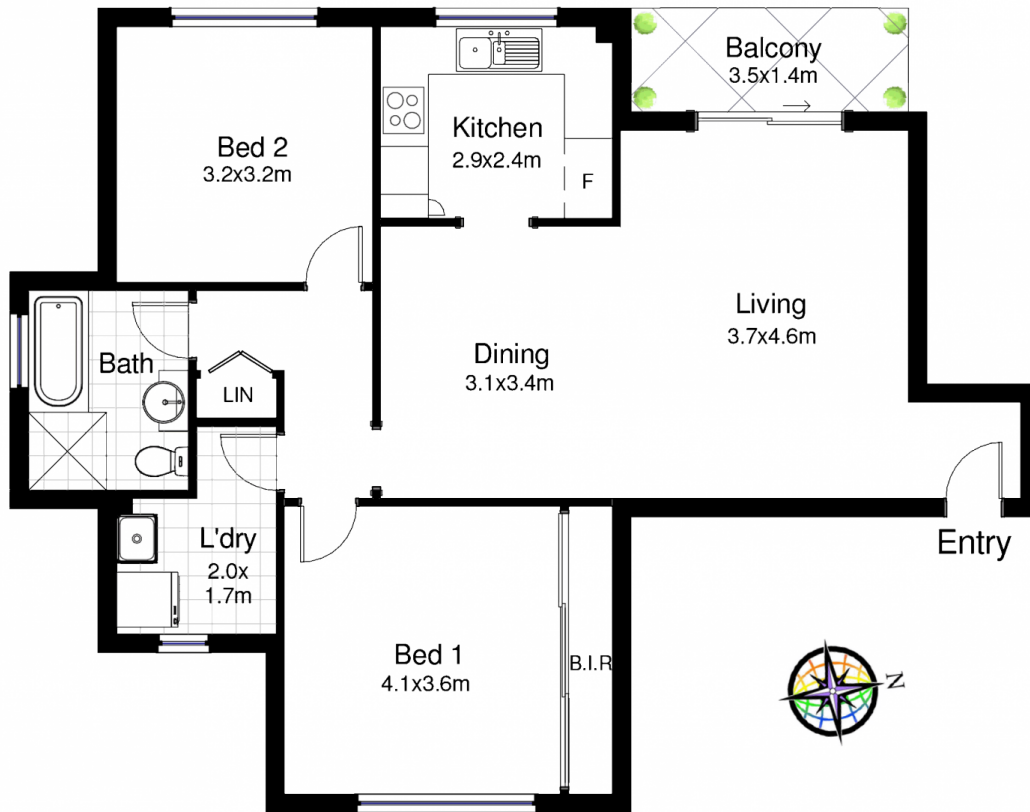
Conveniently located with substantial dimensions and easy living appeal. Located within walking distance to Gymea Village, bus, train & Trade Union Club. Ideal for a 1st home owner, investor or downsizer.

- * Two generous size bedrooms
- * Expansive living and dining area
- * Sunny balcony facing Hazlehurst Art Gallery
- * Substantial kitchen with plenty of cupboards
- * Oversized bathroom, quality fittings
- * SLUG with internal access

Type : Unit
Land Size : 101 sqm
View : <https://www.jreproperty.com.au/sale/nsw/sutherland/gymea/residential/unit/7488741>



Trent Jeffree
02 9540 2222



4/776 Kingsway, GyMEA

DISCLAIMER: This is for illustrative purposes only. All dimensions are approximate and it does not constitute part of any legal documents.