



**19 Erang Avenue KIRRAWEE NSW**

5 🏠 2 🚗 2 🚗

Positioned in a quiet cul-de-sac location and in a well sought after pocket of Kirrawee and close to Gymea, this striking residence offers spacious living throughout with an abundance of natural light and is sure to accommodate the entire family.

**Type** : House  
**Land Size** : 708 sqm  
**View** : <https://www.jreproperty.com.au/sale/nsw/sutherlandland/kirrawee/residential/house/7488743>

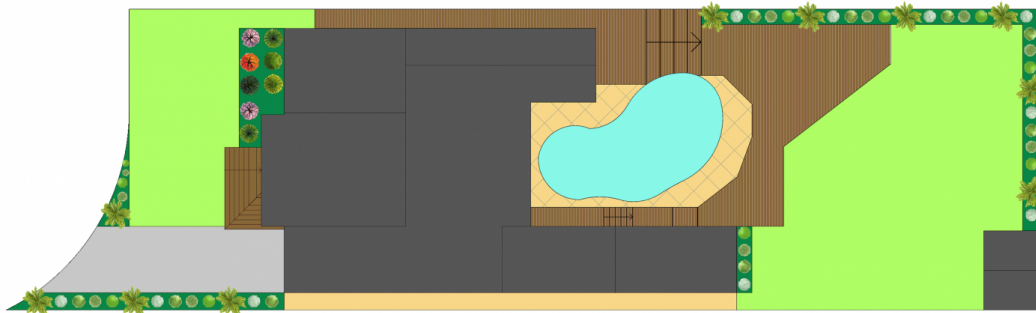
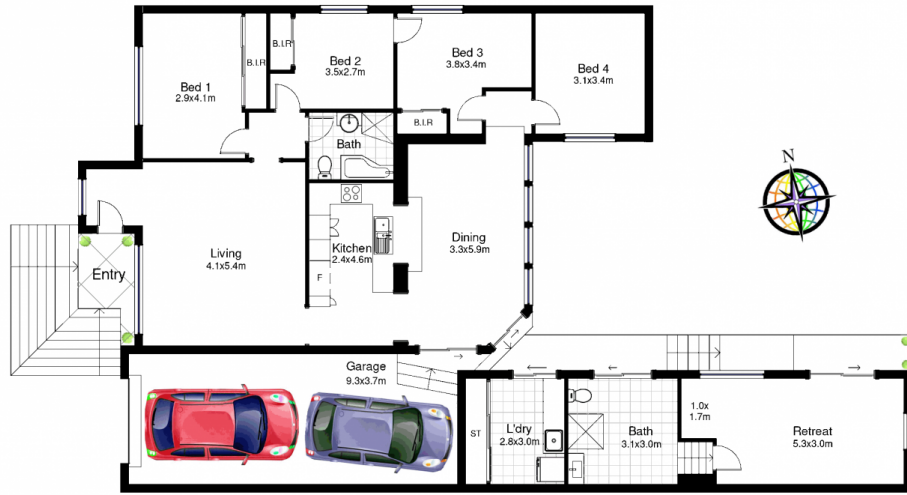
Displaying many attributes while creating natural spaces to be enjoyed all year round with multiple alfresco decks, a stunning in-ground saltwater swimming pool and a level grassed yard surrounded by lush manicured gardens.

- \* Caesar stone gas kitchen with ample storage
- \* Stunning atrium dining area with remote control shade screen
- \* Separate guest accommodation or teenage retreat with



**Luke Jeffree**  
02 9540 2222

[For full version visit the website](https://www.jreproperty.com.au)



## 19 Erang Avenue, Kirrawee

DISCLAIMER: This is for illustrative purposes only. All dimensions are approximate and it does not constitute part of any legal documents.