



6/34-38 Hotham Road GYMEA NSW

2 2 1

This fabulous open plan, sun drenched property is so appealing & is securely nestled at the rear of a well maintained & popular complex. The open plan living area flows out to a peaceful & private garden courtyard. The 2 large bedrooms, each have a wonderful garden outlook from their large windows. Internal access from the auto garage makes this freshly painted Villa perfect for easy living. Supremely located just strolling distance to the GyMEA Village, schools & station.

Features:

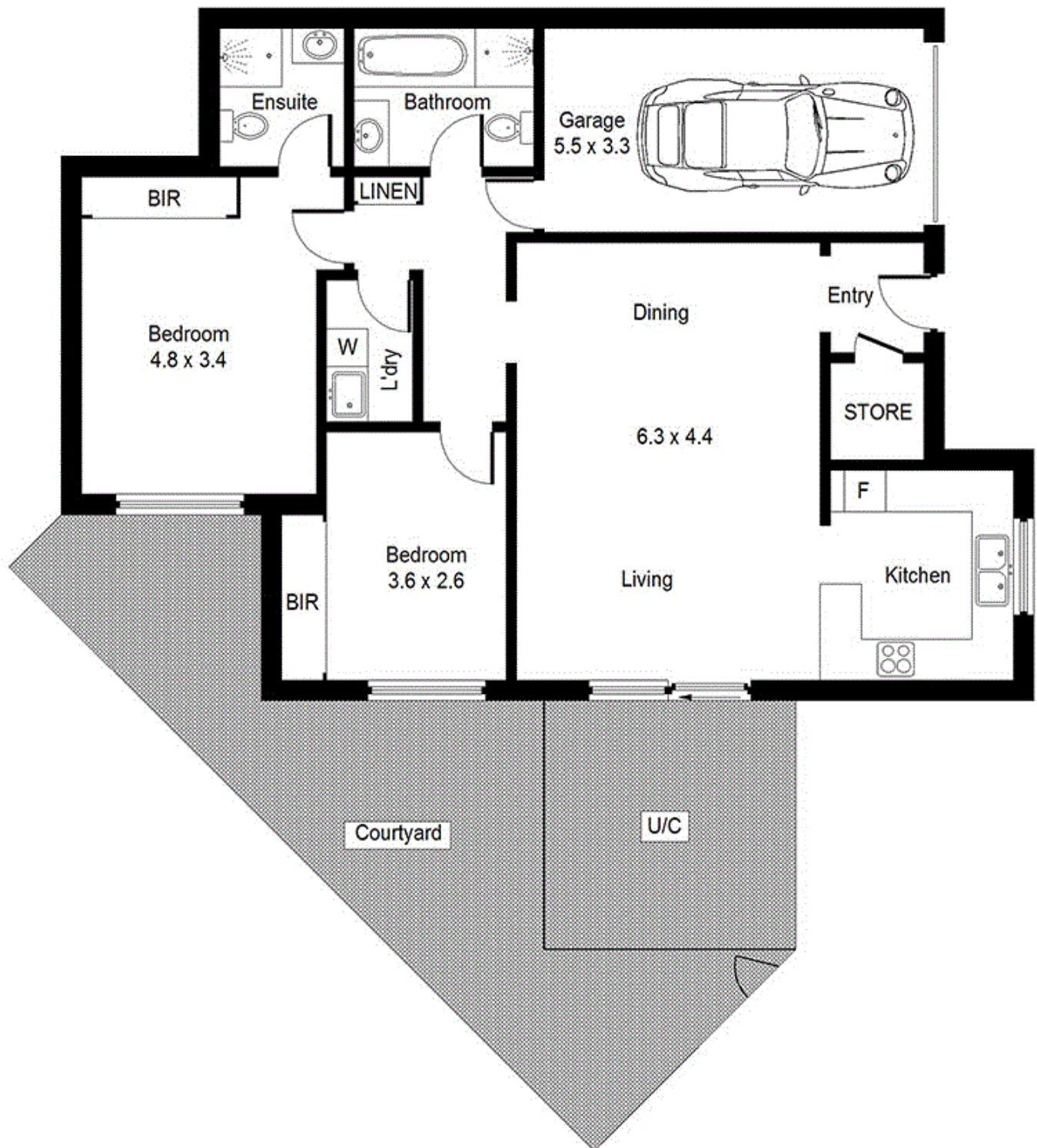
- * Lovely open plan living
- * Kitchen with good storage & appliances
- * Large light & bright bedrooms with built in robes

[For full version visit the website](https://www.jreproperty.com.au/sale/nsw/sutherland/gyMEA/residential/villa/7488759)

Type : Villa
Land Size : 154 sqm
View : <https://www.jreproperty.com.au/sale/nsw/sutherland/gyMEA/residential/villa/7488759>



Glenda Williams
02 9540 2222



6/34-38 Hotham Road, Gymea

Please note: All stated dimensions are approximate only.
Particulars given are of general information only and do not
constitute any representation on the part of the vendor or agent.

