



8/25-29 Koorabel Avenue GYMEA NSW

3  **2**  **2** 

Positioned on the top floor of a tightly held security complex and within walking distance to Gymea village shops, cafes and transport this 3-bedroom apartment is sure to tick the boxes.

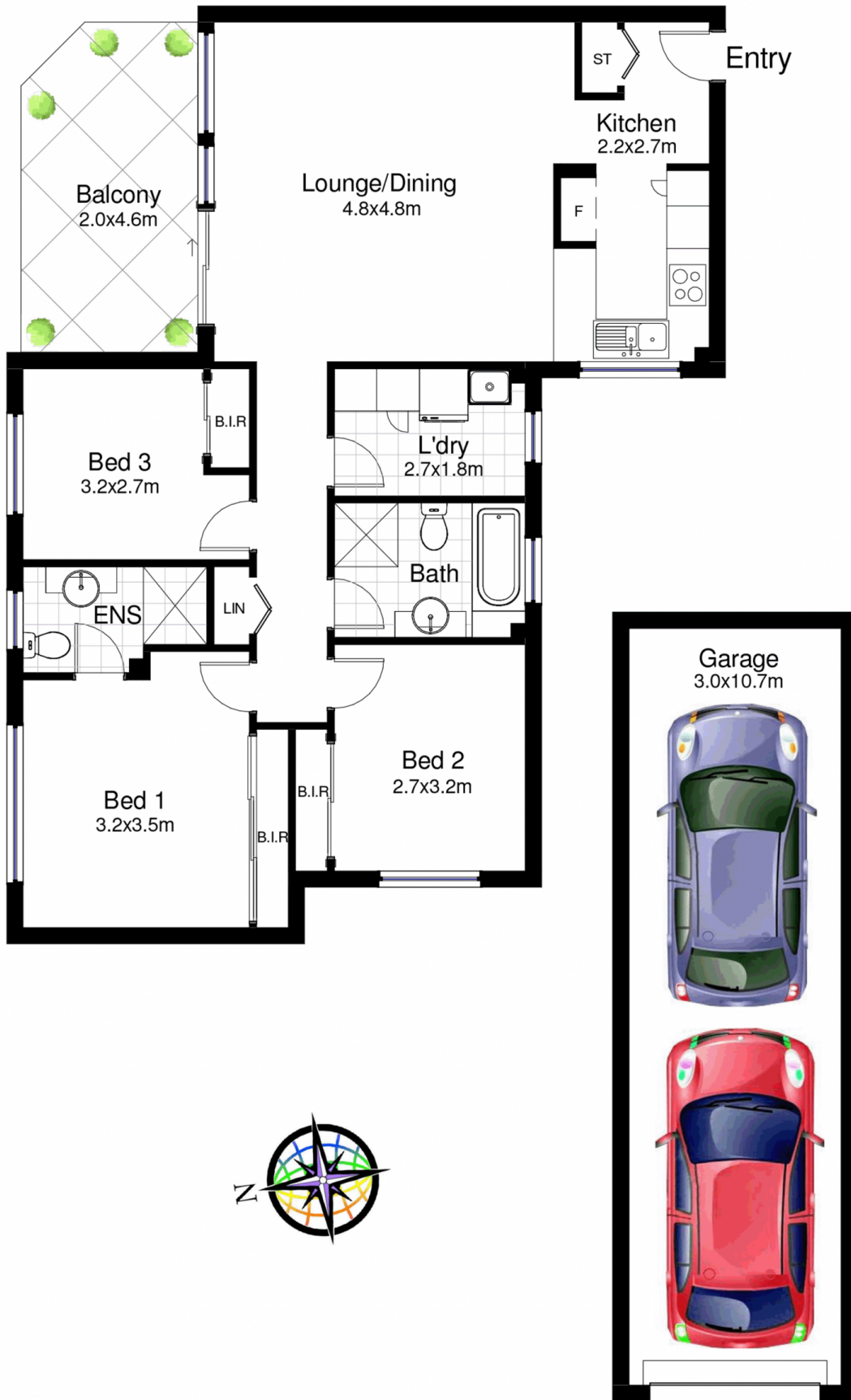
View : <https://www.jreproperty.com.au/sale/nsw/sutherland/gymea/residential/unit/7488767>

Boasting light filled interiors throughout this apartment has been meticulously maintained and awaits its new owner to add their touches.



Trent Jeffree
02 9540 2222

- * Open plan living/dining area with separate kitchen
- * 3 Bedrooms, all with built in robes and main with ensuite
- * Reverse cycle air conditioning
- * Large tiled balcony with leafy aspect
- * Huge internal laundry to accommodate storage
- * Modern tiled bathroom with bath and separate shower
- * Tandem lock up garage
- * Currently leased until 26th May 2018



8/25-29 Koorabel Avenue, Gymea

DISCLAIMER: This is for illustrative purposes only. All dimensions are approximate and it does not constitute part of any legal documents.