



15/22-28 Premier Street GYMEA NSW

2 2 2

A lush, leafy setting in a beautifully maintained boutique complex adds tremendous appeal to this immaculately presented townhouse, perfectly positioned just a few minutes stroll from Gymea station and vibrant village living. Well-proportioned interiors are appointed with quality contemporary fittings and embrace an idyllic flow to a private outdoor entertaining setting.

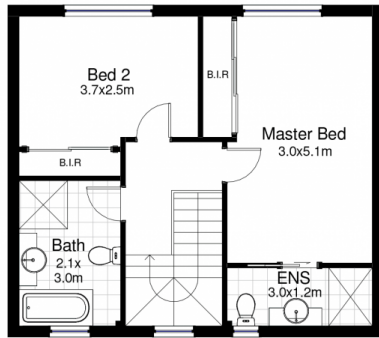
- * Open plan living and dining with floating timber floors
- * Stone-topped kitchen, gas cooktop and dishwasher
- * Low maintenance alfresco courtyard, great for entertaining
- * Upstairs bedrooms all with built-ins, master with ensuite
- * Main bathroom provides separate bath and shower
- * Separate laundry and WC Secure gated complex

[For full version visit the website](https://www.jreproperty.com.au)

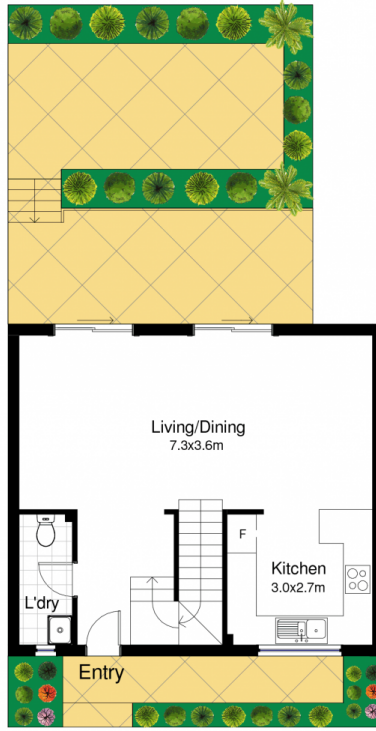
Type : Townhouse
Land Size : 190 sqm
View : <https://www.jreproperty.com.au/sale/nsw/sutherland/gymea/residential/townhouse/7488771>



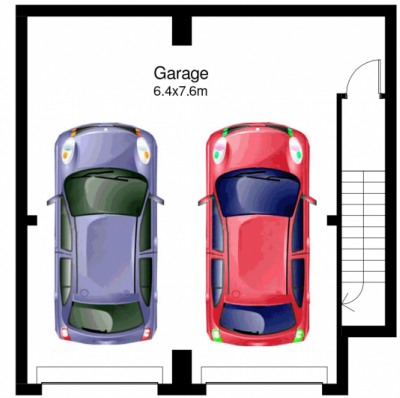
Luke Jeffree
02 9540 2222



First Floor



Ground Floor



Lower Floor



15/22-28 Premier Street, Gymea

DISCLAIMER: This is for illustrative purposes only. All dimensions are approximate and it does not constitute part of any legal documents.