



**82 Arcadia Avenue GYMEA BAY NSW**

4 2 3

Prominently positioned with sweeping views through to the Royal National Park this family home occupies a generous parcel of land with rear lane access via Horns Avenue.

Providing two levels of living the floorplan accommodates an open plan living, dining and study on entry leading to a terrace capturing the elevated views and overlooking the child friendly yard. Downstairs boasts 4 bedrooms, 3 with built-in robes while the master bedroom provides a huge ensuite featuring a corner spa bath and walk in robe.

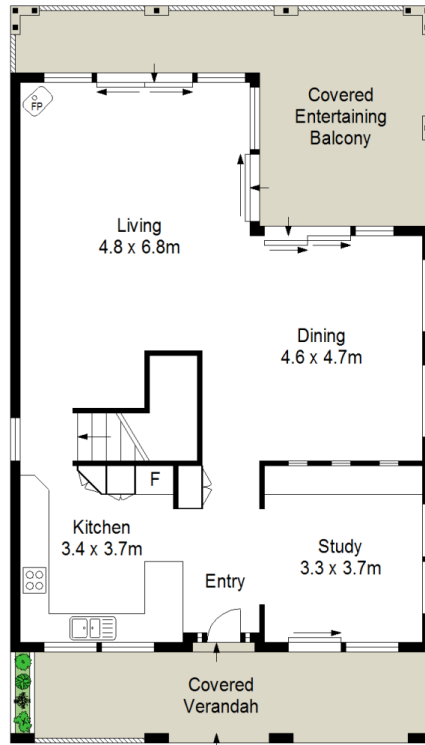
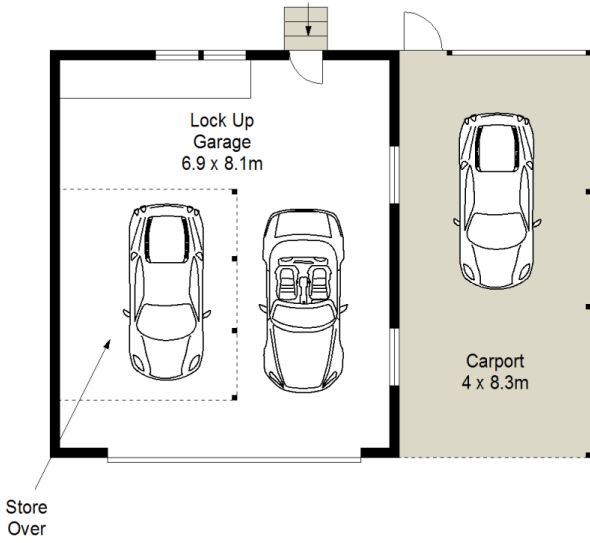
Peacefully set within the Kirrawee High catchment with plenty of scope to extend also potential to improve makes this an outstanding opportunity for the growing family.

\* Open plan living and dining area with combustion fire place

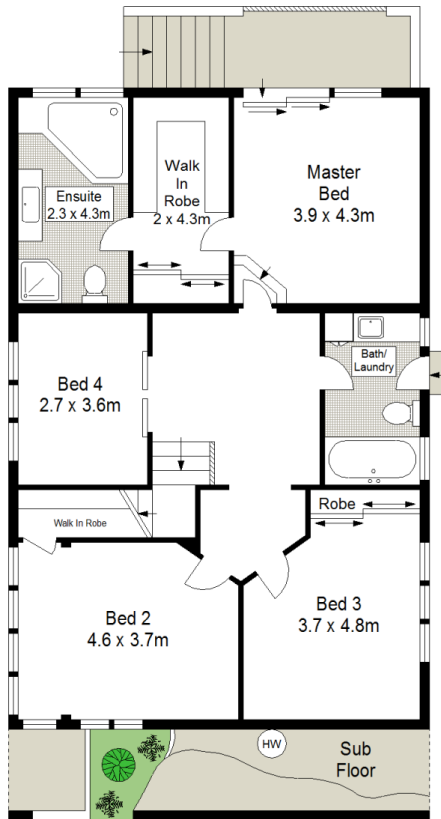
**Land Size** : 929.5 sqm  
**View** : <https://www.jreproperty.com.au/sale/nsw/sutherland/gymea-bay/residential/house/7488789>



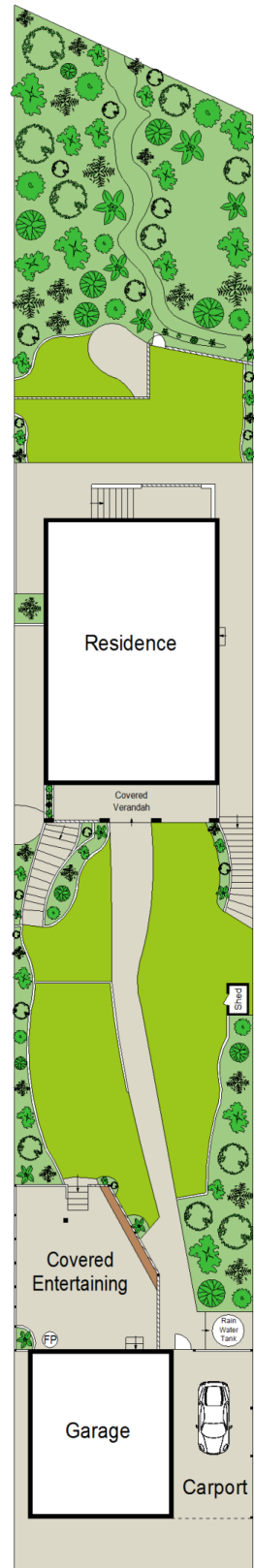
**Luke Jeffree**  
02 9540 2222



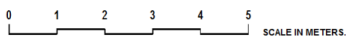
**GROUND FLOOR**



**LOWER GROUND FLOOR**



**SITE PLAN  
(NOT TO SCALE)**



Scale in metres. Indicative only. Dimensions are approximate. All information contained herein is gathered from sources we believe to be reliable. However we cannot guarantee its accuracy and interested persons should rely on their own enquiries.

