

9/1-9 Warburton Street GYMEA NSW

2 1 1

Relax and entertain in this spacious elevated ground floor apartment, immaculately maintained and ready to enjoy. Benefiting from a perfect north aspect its sunny living areas are complimented by an updated kitchen & spacious bedrooms both with built-in robes. An easy stroll to Gymea village's boutique shops, eateries, bus and rail.

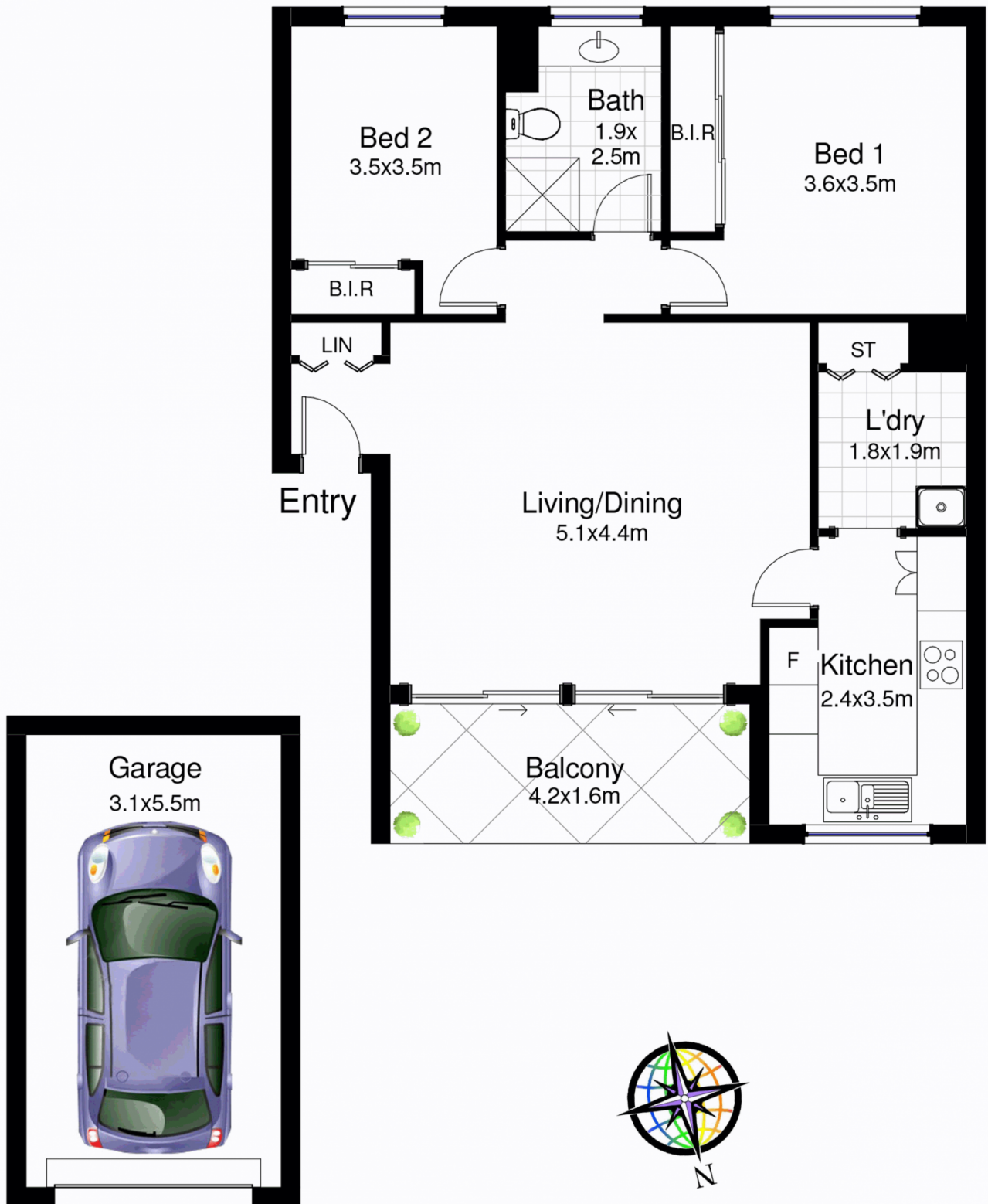
Land Size : 93 sqm
View : <https://www.jreproperty.com.au/sale/nsw/sutherlandland/gymea/residential/unit/7488790>

- * Easy access, quality security building
- * Two good sized bedrooms both with BIR's
- * Immaculate bathroom, excellent storage
- * Updated kitchen with Miele appliances
- * Exceptional starter/investor in prime locale

Water rates - \$172.00 per quarter
Council rates - \$264.00 per quarter
Strata levies - \$579.00 per quarter



Trent Jeffree
02 9540 2222



9/1-9 Warburton Street, Gymea

DISCLAIMER: This is for illustrative purposes only. All dimensions are approximate and it does not constitute part of any legal documents.