

35/131-139 Oak Road KIRRAWEE NSW

2  1  2 

#### CONVENIENTLY LOCATED

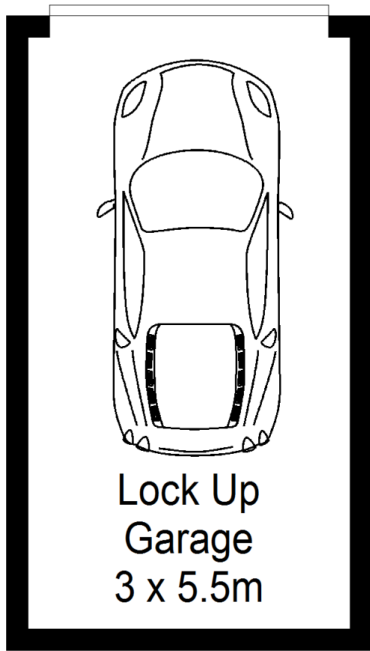
Beautifully renovated 2 bedroom apartment, featuring sun-drenched interiors & practical floorplan. Ideally located in the heart of Kirrawee, moments from parks, eateries, recreation and a wide range of other convenient amenities.

Large combined living/dining with air conditioning flowing out to a north facing balcony. Single lock up garage with an additional secure parking space. Ready to move in without a cent to spend.

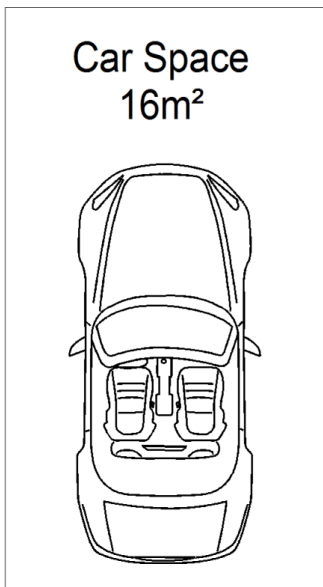
- \* Modern kitchen with new appliances
- \* Flexible open plan living spaces
- \* Air conditioned
- \* North facing covered balcony
- \* Light filled bedrooms with BIW

**Land Size** : 115 sqm

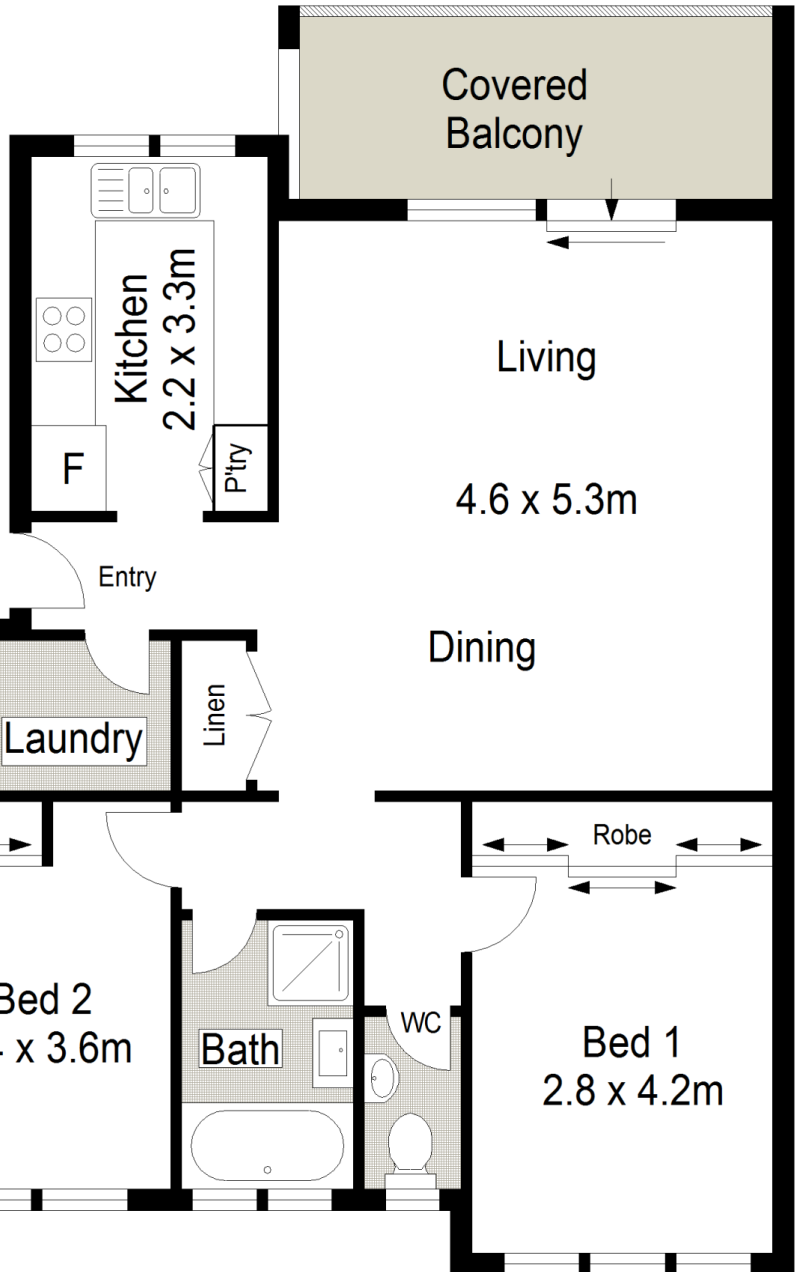
**View** : <https://www.jreproperty.com.au/sale/nsw/sutherlandland/kirrawee/residential/unit/7488812>



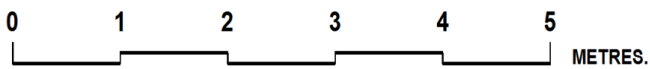
**BASEMENT**



**BASEMENT**



**TOP FLOOR**



Scale in metres. Indicative only. Dimensions are approximate. All information contained herein is gathered from sources we believe to be reliable. However we cannot guarantee its accuracy and interested persons should rely on their own enquiries.