



**20 Avenel Road GYMEA BAY NSW**

4 3 2

Relaxed living meets family convenience with this home that will suit a large range of buyers. With four bedrooms and a multitude of light filled living areas there is a wealth of opportunities for the savvy buyer. Internal and/or external access to a downstairs rumpus area with bathroom facilities can potentially be used for a home office, separate accommodation or an added income to assist day to day living. A family friendly yard offering a sunny north/west aspect is ready for immediate enjoyment. Nestled in popular Gymea Bay and wonderfully central the address enjoys minutes walk to either Gymea Bay Public School or Kirrawee High School.

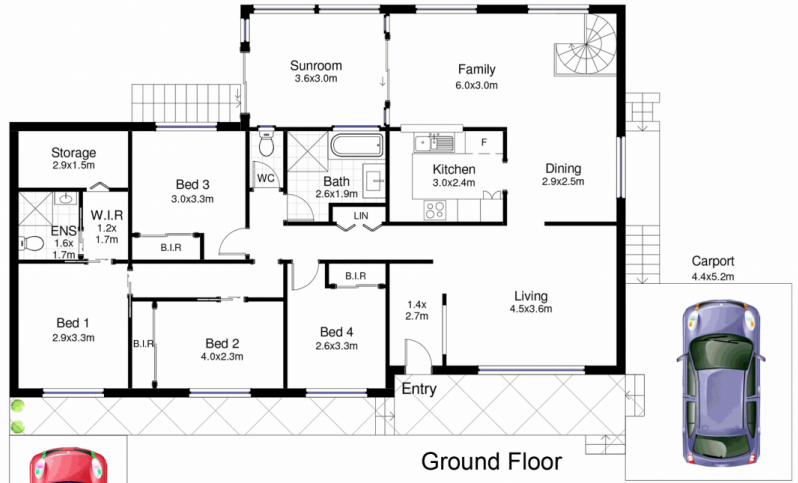
- \* Four generous bedrooms all with built in wardrobes
- \* Master bedroom with ensuite and walk in wardrobe

[For full version visit the website](https://www.jreproperty.com.au)

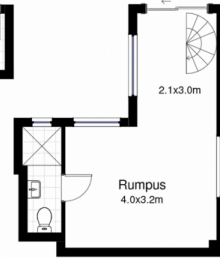
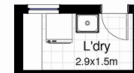
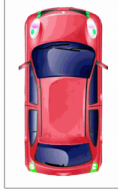
**Type** : House  
**Price** : \$ 1,030,000  
**Land Size** : 569 sqm  
**View** : <https://www.jreproperty.com.au/sale/nsw/sutherlandland/gymea-bay/residential/house/7488820>



**Luke Jeffree**  
02 9540 2222



Ground Floor



Lower Floor



## 20 Avenel Road, Gymea Bay

DISCLAIMER: This is for illustrative purposes only. All dimensions are approximate and it does not constitute part of any legal documents.