



15 Carter Crescent GYMEA BAY NSW

5 3 2

Situated in one of Gymea Bay's most sought after cul-de-sac location resides this palatial family home. Showcasing soaring pitched ceilings and lavish indoor and outdoor entertaining areas whilst capturing the tranquil beauty of the superb leafy surrounds.

Creating effortless year round living and entertaining, enjoy the sunny private level yard or challenge your friends to a game of 1/2 court tennis. Relax in the sparkling in-ground pool or simply entertain in style on the broad timber deck.

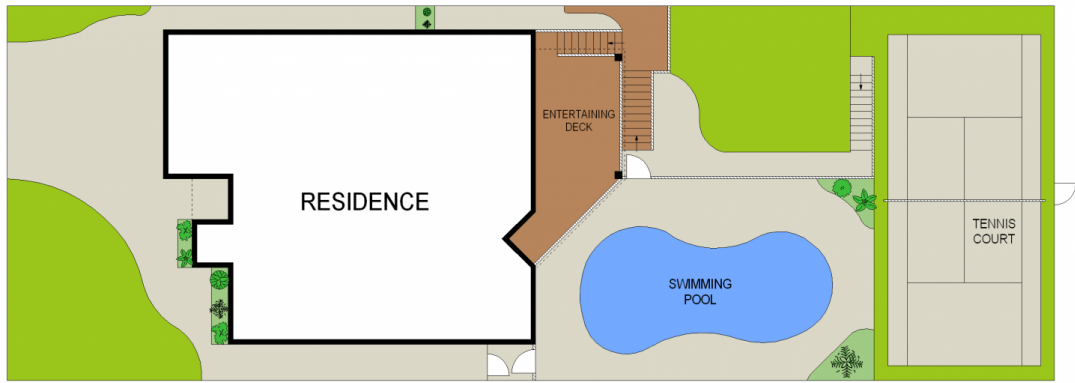
- * Multiple choices of spacious formal and casual living and dining areas
- * Designer granite kitchen with ample storage + breakfast bar with a view

[For full version visit the website](https://www.jreproperty.com.au)

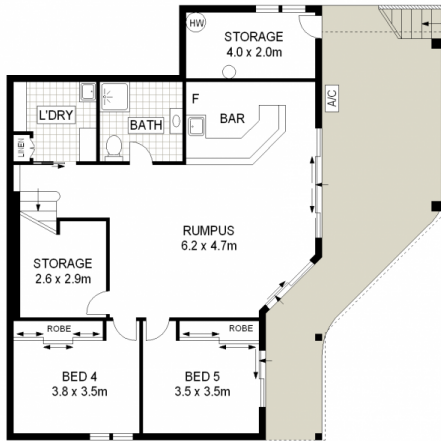
Type : House
Price : \$ 1,700,000
Land Size : 695 sqm
View : <https://www.jreproperty.com.au/sale/nsw/sutherland/gymea-bay/residential/house/7488834>



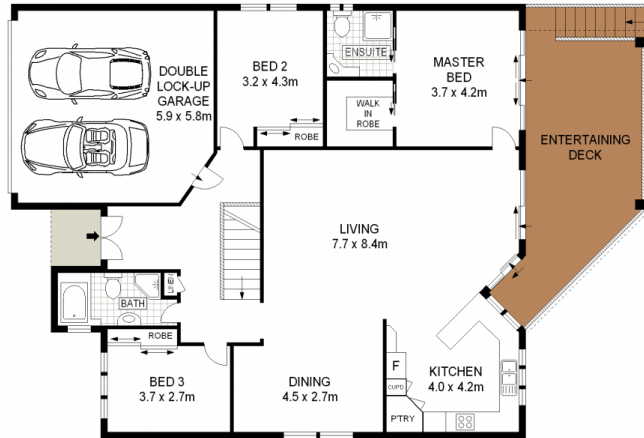
Luke Jeffree
02 9540 2222



SITE PLAN (NOT TO SCALE)



LOWER GROUND FLOOR



GROUND FLOOR

ADDRESS :

15 Carter Crescent, GYMEA BAY



DISCLAIMER: THIS IS FOR ILLUSTRATIVE PURPOSES ONLY. ALL DIMENSIONS ARE APPROXIMATE AND IT DOES NOT CONSTITUTE PART OF ANY LEGAL DOCUMENTS.