



8/1098 Old Princes Highway ENGADINE NSW

2 1 1

8/1098 Old Princes Highway, Engadine (Corner of Old Princes highway & Engadine Avenue, with entrance facing Engadine Avenue)

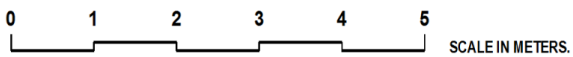
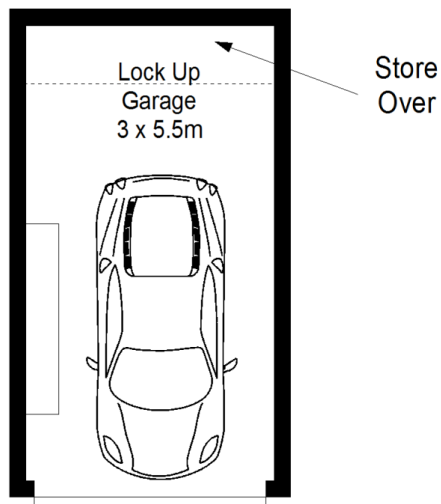
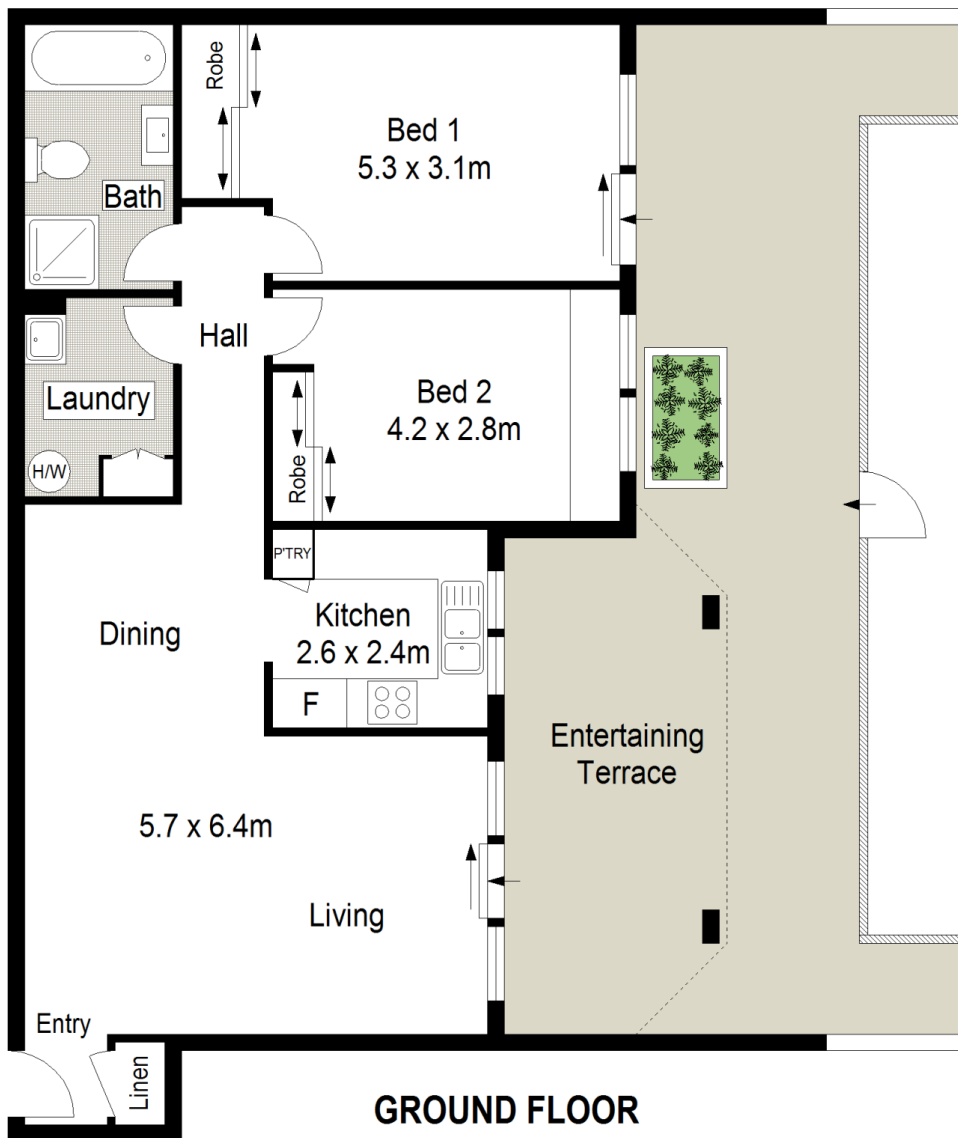
You will fall in love with this beautifully presented & updated spacious Unit with a fantastic floorplan. Simply move in & enjoy...not a thing to be done! Situated in a security block with a private position & lovely outlook. A superb balcony area, perfect for the entertainers & children also. (Small pet friendly) So close to playgrounds, parks & a just a few minutes to the railway & shops. Don't miss out on your inspection of this special Unit.

- * Positioned on the elevated ground floor of this complex
- * Oversized Unit floor area 89m2 with Lock up security garage 105m2 approx.
- * Wonderful updated kitchen with stainless steel, quality

Building Size : 10 sqm
Land Size : 101 sqm
View : <https://www.jreproperty.com.au/sale/nsw/sutherland/engadine/residential/unit/7488842>



Glenda Williams
02 9540 2222



Scale in metres. Indicative only. Dimensions are approximate. All information contained herein is gathered from sources we believe to be reliable. However we cannot guarantee its accuracy and interested persons should rely on their own enquiries.



8/1098 Old Princes Highway, Engadine