



**21 Manchester Road GYMEA NSW**

4 2 1

Positioned within a family friendly area, this property is instantly appealing, offering warmth and modern comforts over two immaculate levels. Encompassing a fabulous sense of space with its well-proportioned and multiple indoor and outdoor living areas, this home offers supreme versatility for family living.

**Land Size** : 708.2 sqm  
**View** : <https://www.jreproperty.com.au/sale/nsw/sutherlandland/gymea/residential/house/7488845>

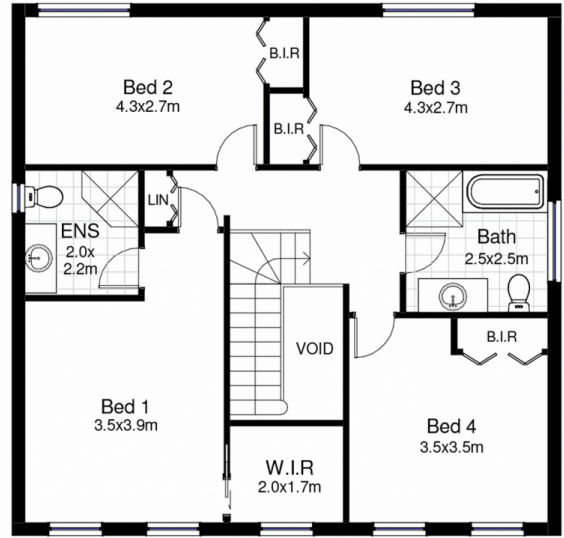
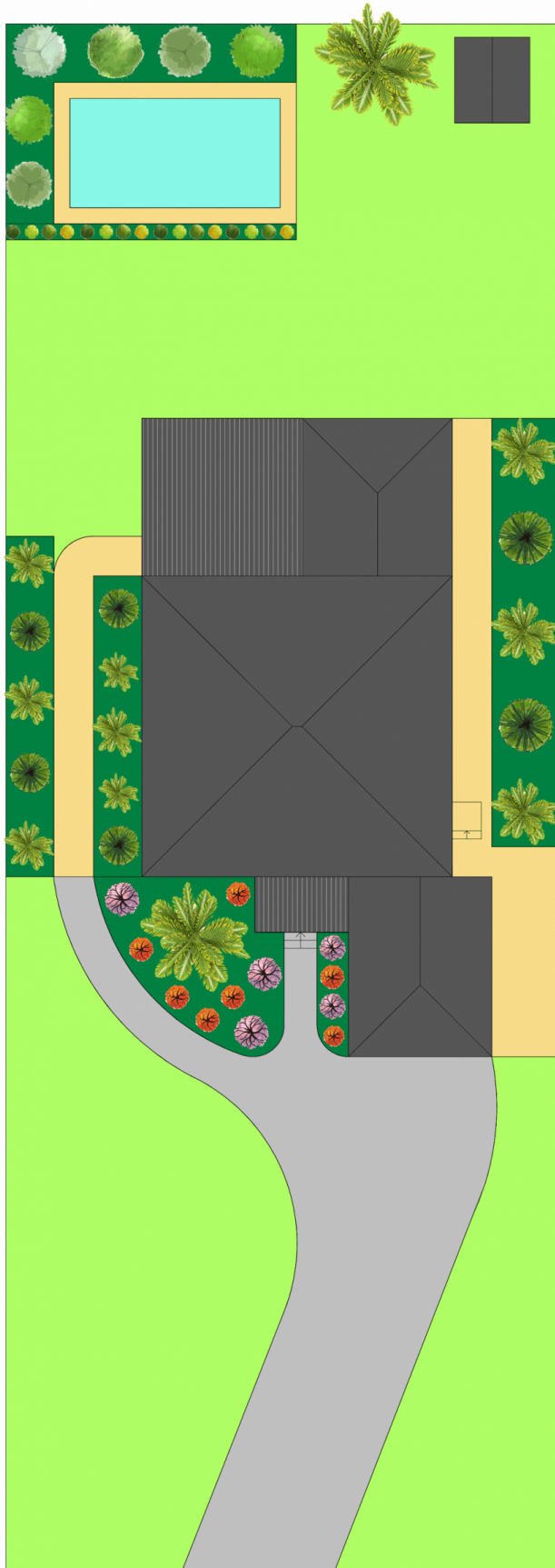
In walking distance to the ever popular Gymea Village, cafes, shops, restaurants and public transport.

- \* Generous and multiple living zones
- \* Modern kitchen with stone benches and gas cooktop
- \* 4 bedrooms, master with ensuite and walk in wardrobe
- \* Large undercover entertaining area, in-ground pool
- \* Alarm system / ducted vacuum / plenty of storage
- \* Corner positioned block on a generous 708.2sqm of land
- \* Single lock up garage / Close proximity to Gymea cafes

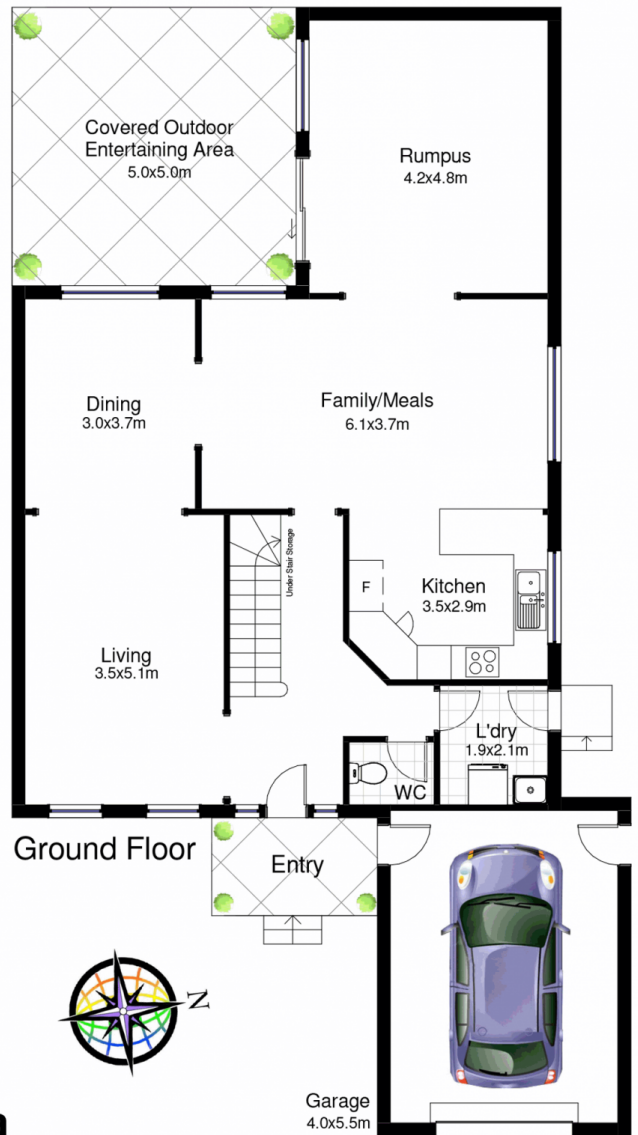


**Luke Jeffree**  
**02 9540 2222**





First Floor



## 21 Manchester Road, Gymea

DISCLAIMER: This is for illustrative purposes only. All dimensions are approximate and it does not constitute part of any legal documents.