



**15/513-517 Kingsway MIRANDA NSW**

2 1 1

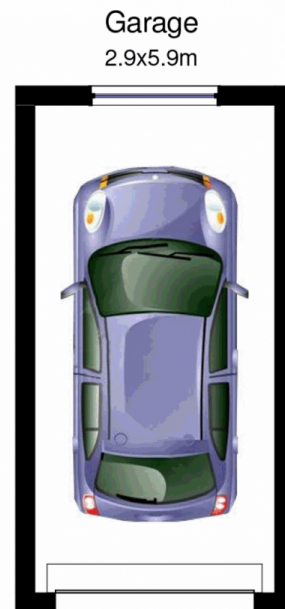
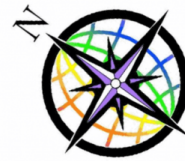
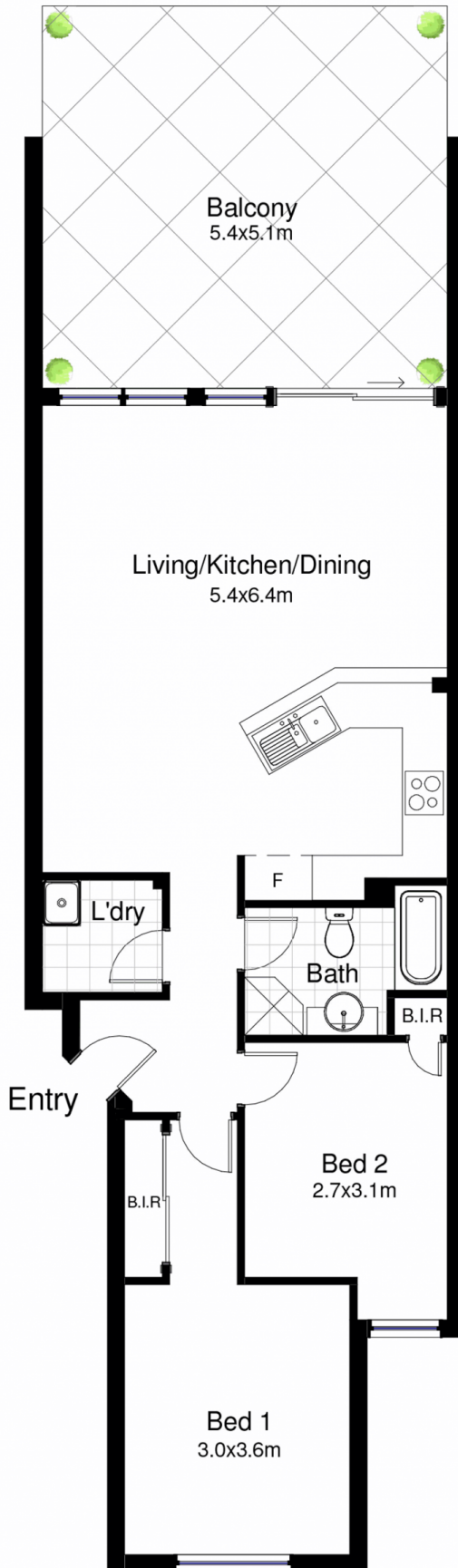
Modern, spacious and beautifully bright, this stylishly appointed and generously proportioned elevated ground floor apartment presents a fantastic opportunity for the savvy buyer. North facing and light filled with a private leafy aspect all whilst being moments to the vibrant heart of Miranda Westfield, bus and rail.

**Building Size** : 12 sqm  
**View** : <https://www.jreproperty.com.au/sale/nsw/sutherland/miranda/residential/apartment/7488861>

- \* Spacious and open plan living & dining with timber flooring & air conditioning
- \* Generous north east facing alfresco balcony ideal for entertaining
- \* Modern kitchen with granite tops & stainless appliances
- \* Two bedrooms, both with built-in wardrobes, alarm system
- \* Single lock up garage, security intercom, freshly painted, new carpet



**Luke Jeffree**  
**02 9540 2222**



## 15/513-517 Kingsway, Miranda

DISCLAIMER: This is for illustrative purposes only. All dimensions are approximate and it does not constitute part of any legal documents.