

58B Bunarba Road GYMEA BAY NSW

4 3 2

LAST REMAINING! OFFERS WILL BE CONSIDERED
#58 SOLD \$1,650,000 - #58B SOLD \$1,700,000 - #58C SOLD \$1,650,000

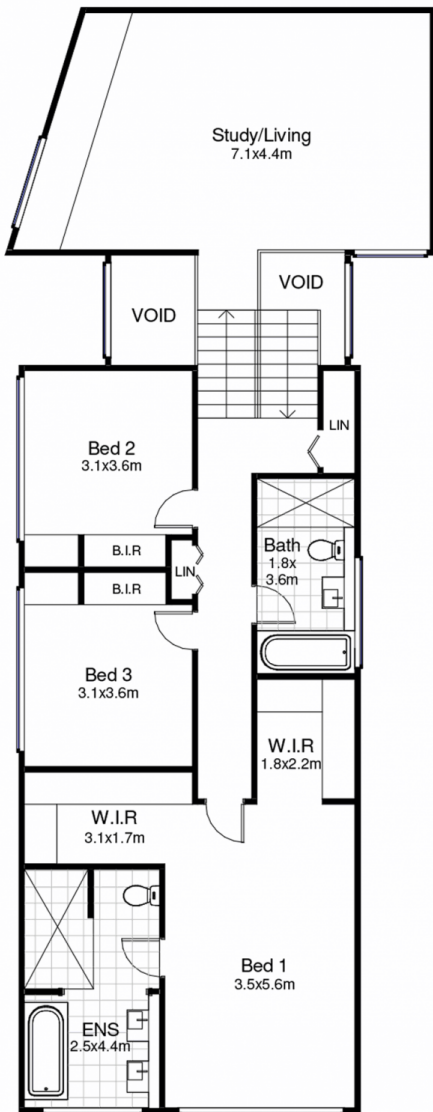
Luxurious and freestanding this architecturally designed 4-bedroom home boasts a private spacious easy living floor plan fashioned to a grand scale over two levels of modern living.

This substantial brand-new home has been designed to maximise light filled interiors across a contemporary floor plan and accommodate a growing family with ease while enjoying a North facing aspect with high ceilings and floor to ceiling windows.

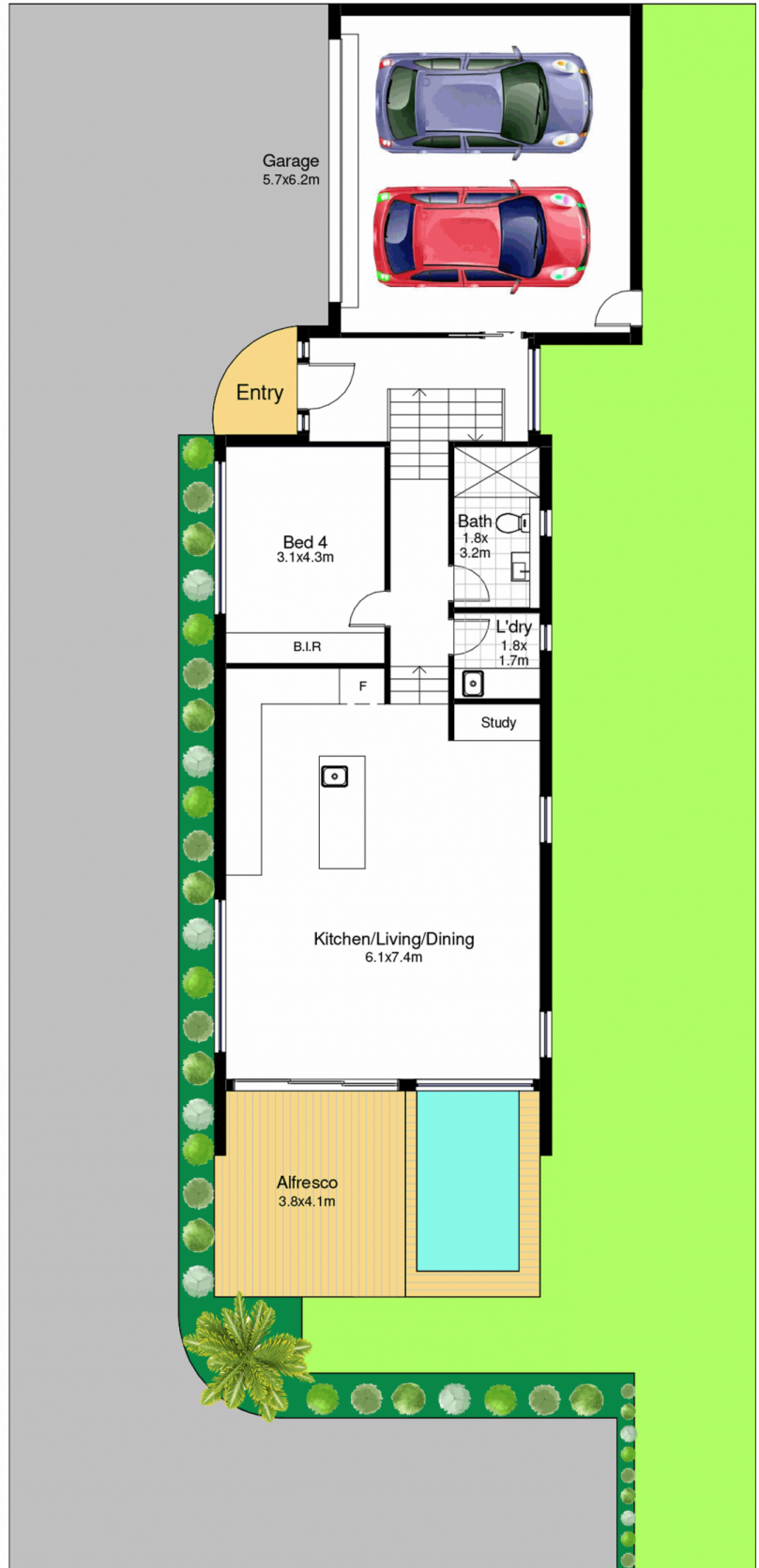
Entertain outdoors all year round with a covered alfresco area including built-in BBQ area that overlooks the mineral

Type : Townhouse
Building Size : 22 sqm
Land Size : 274 sqm
View : <https://www.jreproperty.com.au/sale/nsw/sutherland/gyMEA-bay/residential/townhouse/7488863>

[For full version visit the website](https://www.jreproperty.com.au)



First Floor



Ground Floor

58B Bunarba Road, Gymea Bay

DISCLAIMER: This is for illustrative purposes only. All dimensions are approximate and it does not constitute part of any legal documents.