



44 Ballar Avenue GYMEA BAY NSW

3 1 2

GREAT FAMILY HOME WITH AN AMAZING OUTLOOK

Peacefully situated within Gymea Bay this family home offers a spacious floorplan connecting to outdoor entertaining areas with a private leafy aspect.

Providing multiple living spaces, the kitchen is the hub of the home and leads to an adjoining dining area and sitting room with an open fire place. An additional living space at the rear of the home flows out to the timber deck via glass doors and overlooking the rear yard.

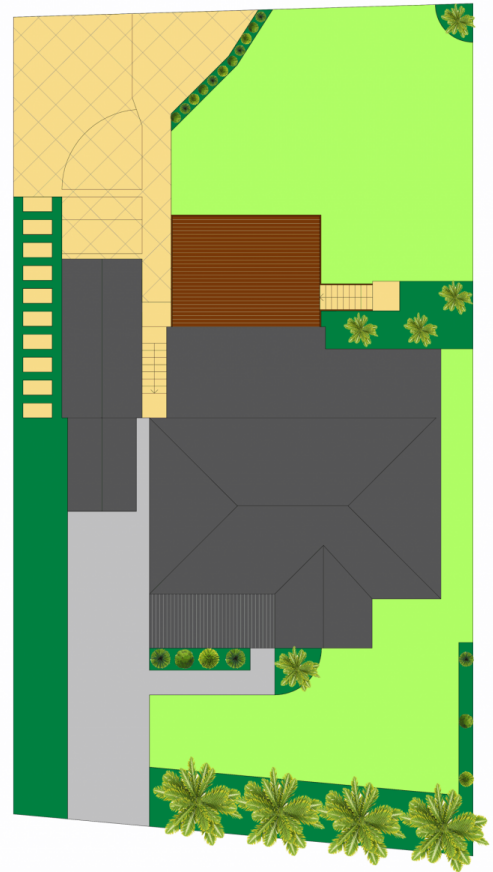
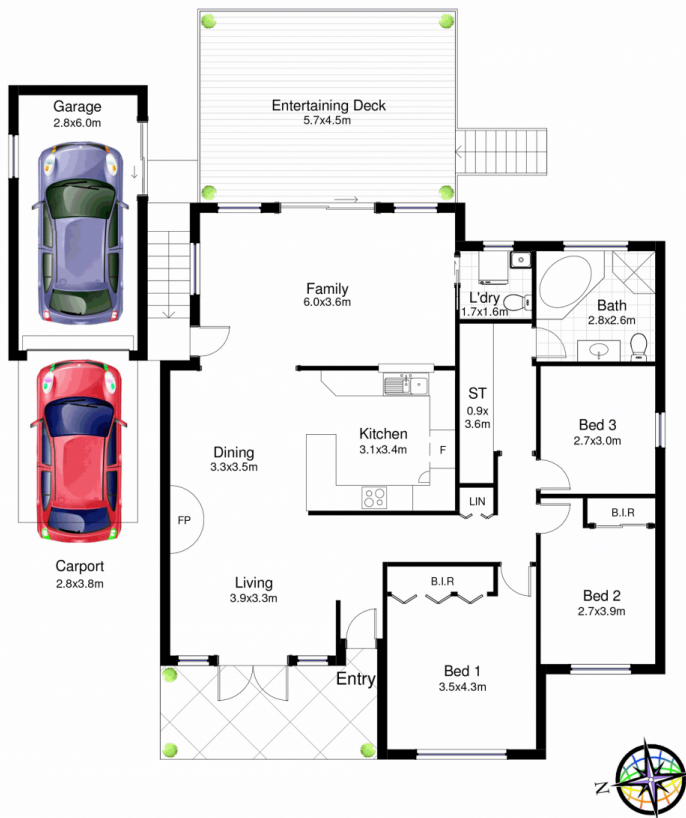
Enjoying uninterrupted valley views on 556.4sqm with low maintenance gardens surrounding a child friendly level grass lawn.

[For full version visit the website](https://www.jreproperty.com.au)

Type : House
Land Size : 556.4 sqm
View : <https://www.jreproperty.com.au/sale/nsw/sutherland/gymea-bay/residential/house/7488868>



Luke Jeffree
02 9540 2222



44 Ballar Avenue, GyMEA Bay

DISCLAIMER: This is for illustrative purposes only. All dimensions are approximate and it does not constitute part of any legal documents.