



**9 Redfern Place GYMEA NSW**

4 2 2

Positioned in a quiet cul-de-sac location this two-storey family home is elevated with a peaceful outlook and offers a versatile floorplan with plenty of scope to extend and improve to further increase your capital.

Endless possibilities with the option of converting the downstairs areas to separate accommodation or the ideal guest/in-law haven.

The rear yard is a blank canvas with level lawn which can easily accommodate a large inground pool and entertaining area with landscaped garden surrounds.

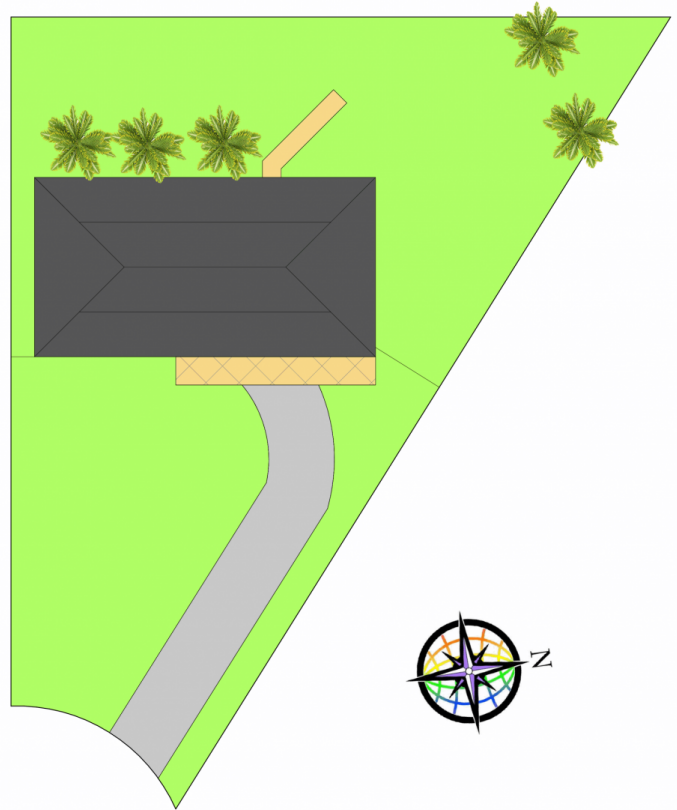
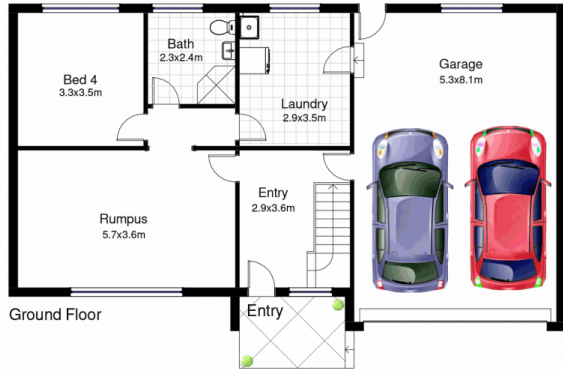
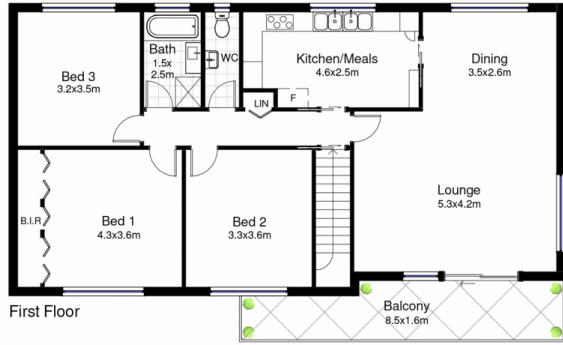
\* 4 generous bedrooms, multiple living areas & resting on a 695.6sqm block

**Type** : House  
**Land Size** : 695.6 sqm  
**View** : <https://www.jreproperty.com.au/sale/nsw/sutherland/gyMEA/residential/house/7488869>



**Luke Jeffree**  
02 9540 2222

[For full version visit the website](https://www.jreproperty.com.au)



## 9 Redfern Place, Gymea

DISCLAIMER: This is for illustrative purposes only. All dimensions are approximate and it does not constitute part of any legal documents.