



### 10A June Place GYMEA BAY NSW

4 2 1

Positioned in a quiet street conveniently located close to schools, shops and parklands this well-proportioned family home is approximately 5 years old with nothing to do but move in and appreciate a low maintenance lifestyle.

The light filled interiors are spacious over two levels with a family friendly floorplan providing down stairs living areas and bedroom and remaining bedrooms upstairs with additional living.

Enjoy entertaining with a seamless flow to the undercover area overlooking a sunny level grass yard with swimming pool at the rear.

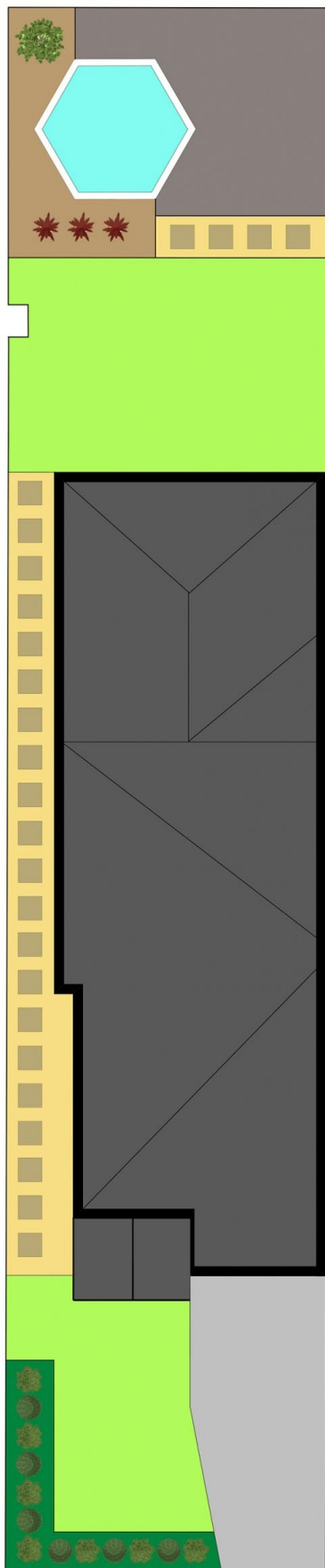
- \* Light filled formal and informal living and dining areas
- \* Caesar kitchen with large concealed walk-in pantry
- \* Teenage retreat/additional living on upper level

[For full version visit the website](https://www.jreproperty.com.au)

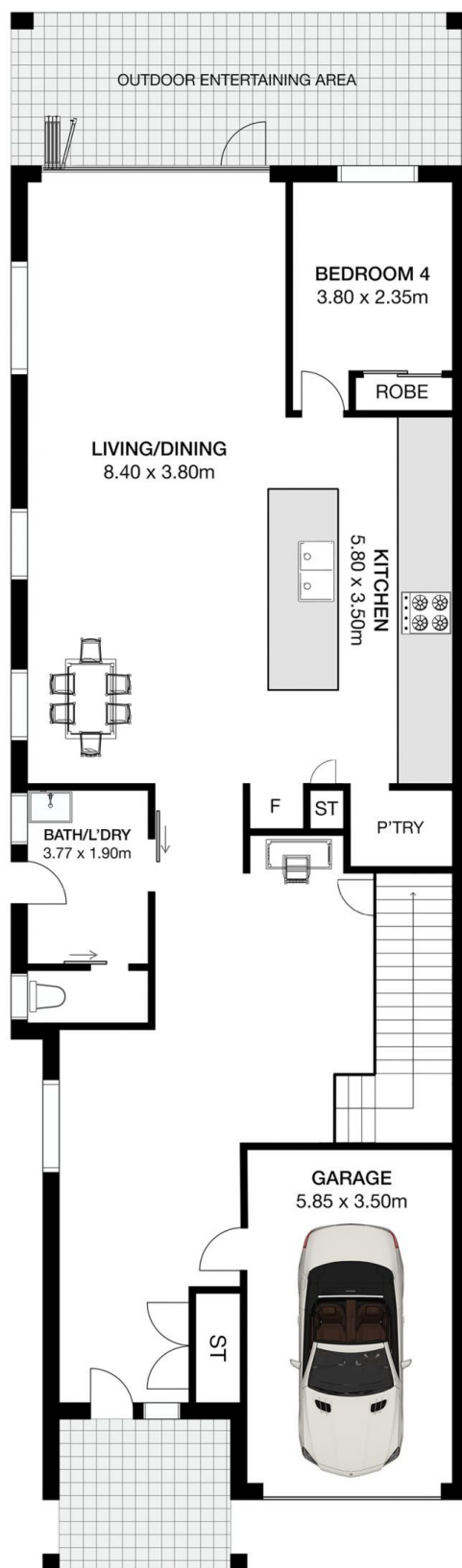
**Type** : Semi Detached  
**Land Size** : 371 sqm  
**View** : <https://www.jreproperty.com.au/sale/nsw/sutherlandland/gymea-bay/residential/semi-detached/7488881>



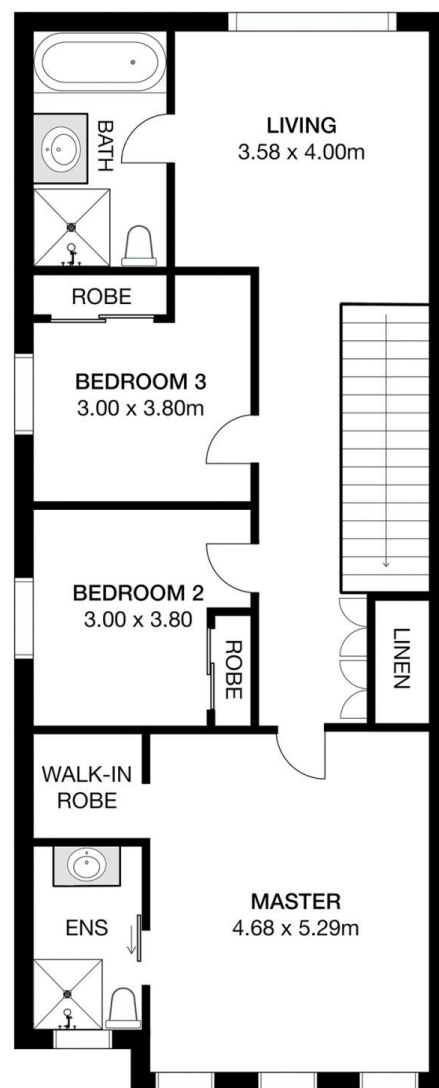
**Luke Jeffree**  
**02 9540 2222**



## GROUND LEVEL



## UPPER LEVEL



## 10A June Place, Gymea

This is for illustrative purposes only. All dimensions are approximations. These illustrations do not constitute part of any legal documents.

