



**8 Rulwalla Place GYMEA NSW**

3 2 2

Positioned in an ultra-quiet cul-de-sac this family home has been meticulously maintained throughout with nothing to do but move in and enjoy the peaceful tranquillity.

Multiple connecting formal and informal living areas that all lead to outdoor areas makes this a great opportunity for a growing family with space in mind which includes an extra living area which could easily be converted to a 4th bedroom without impact on the living spaces.

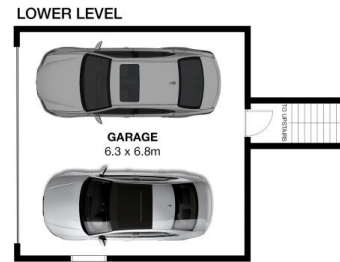
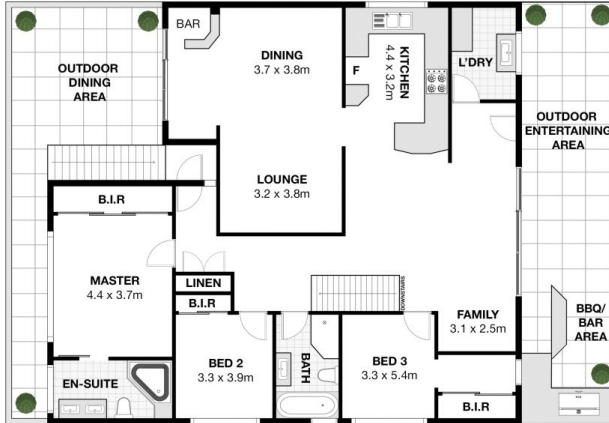
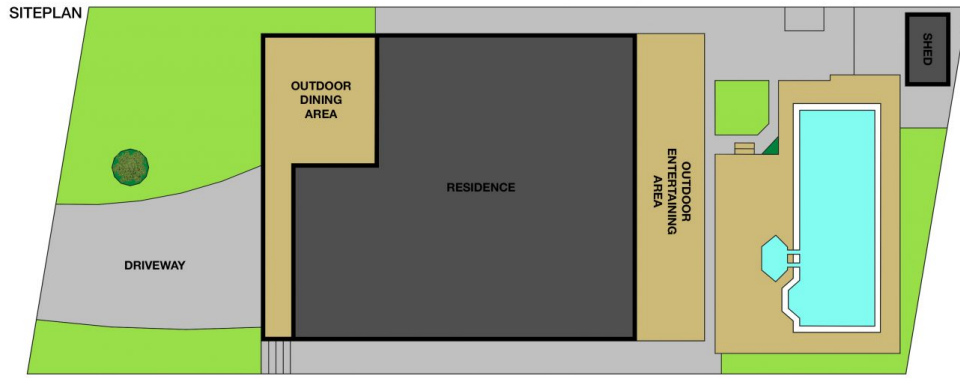
Outdoors boasts manicured lawns with established garden surrounds, covered alfresco complete with BBQ and bar overlooking the sparkling inground saltwater pool and an additional front covered balcony.

\* Formal living and dining area leading to a covered balcony

**Land Size** : 562.8 sqm  
**View** : <https://www.jreproperty.com.au/sale/nsw/sutherland/gyMEA/residential/house/7488889>



**Luke Jeffree**  
**02 9540 2222**



## 8 Rulwala Place, Gymea

This is for illustrative purposes only. All dimensions are approximations. These illustrations do not constitute part of any legal documents.

