

16/494-496 President Avenue KIRRAWEE NSW

2 1 2

This well presented and generously proportioned North facing apartment is located on the ground floor and offers exceptional Kirrawee buying. Very leasable and liveable in its current condition, it provides an opportunity ideal for first home owners or the perfect investment property. Small stroll to the village shops, rail, bus and caf?s.

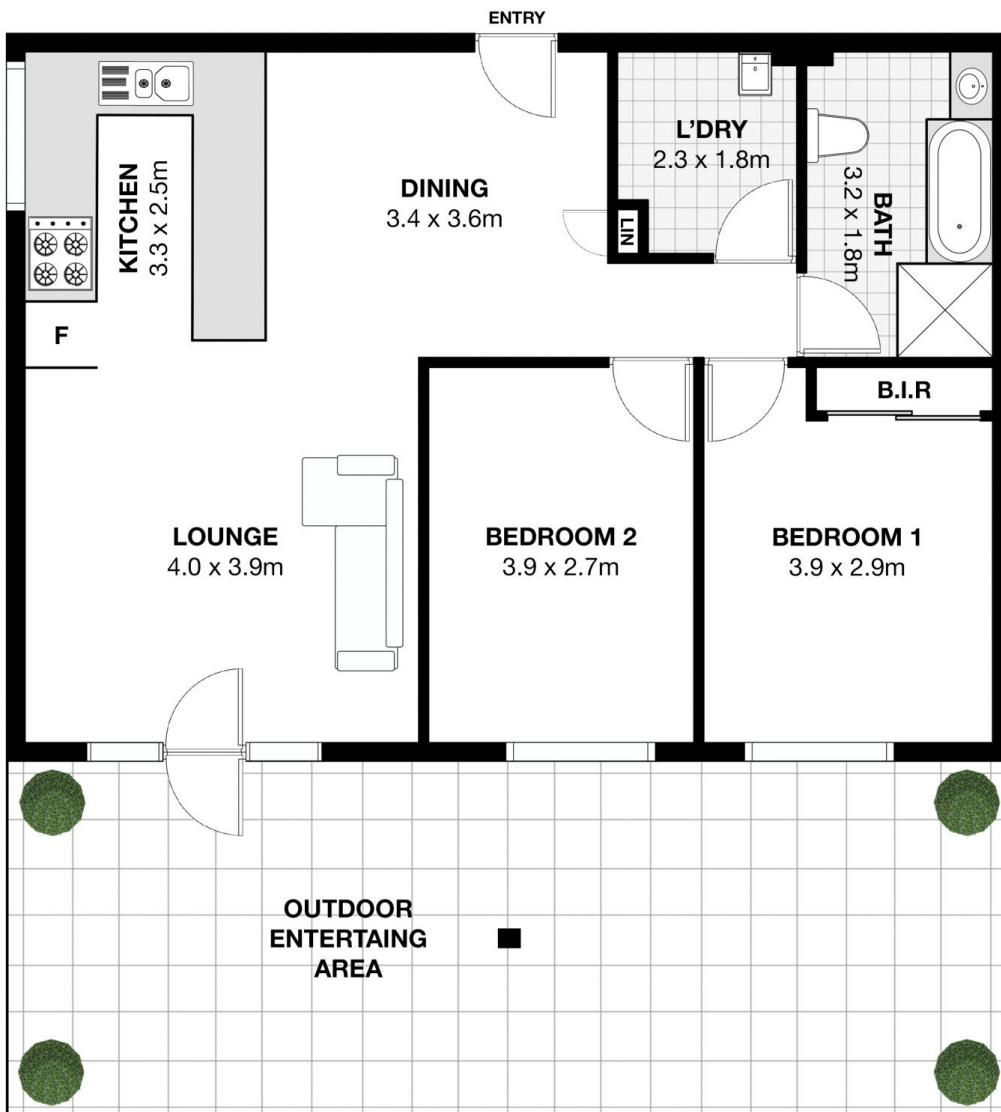
- * Generous bedrooms master with built in wardrobes
- * Spacious open plan living and dining area with floorboards
- * North facing massive entertaining terrace with established hedges
- * Sunfilled kitchen with breakfast bar and plenty of cupboard space
- * Double security car space, internal laundry, split system

Type : Apartment
Building Size : 14 sqm
View : <https://www.jreproperty.com.au/sale/nsw/sutherland/kirrawee/residential/apartment/7488890>



Luke Jeffree
02 9540 2222

[For full version visit the website](https://www.jreproperty.com.au)



16/494-496 President Avenue, Kirrawee

This is for illustrative purposes only. All dimensions are approximations. These illustrations do not constitute part of any legal documents.

