



5/4-6 Paddison Avenue GYMEA NSW

3 2 2

Focused on a family friendly, easy care lifestyle, this impressive townhouse offers more than most. Placed in a stylish boutique complex, its generosity of space and high-end designer finishes accompanied by a cosmopolitan feel makes this townhouse a must to inspect while its position is unparalleled with an easy stroll to the village, rail and school.

- * Three generous bedrooms all with built in wardrobes
- * Master bedroom with ensuite and supreme main bathroom
- * Bright and open living and dining areas which have great flow
- * Expansive kitchen with gas cooktop and stainless steel appliances

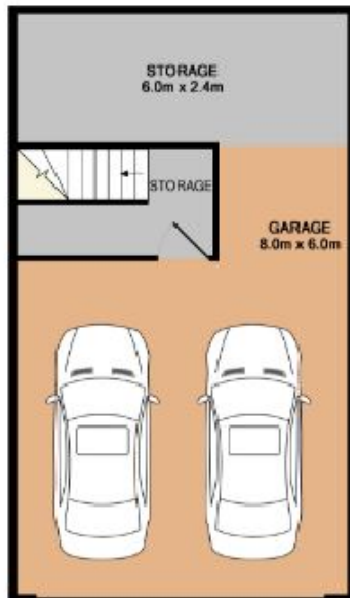
Type : Townhouse

View : <https://www.jreproperty.com.au/sale/nsw/sutherland/gymea/residential/townhouse/7488892>



Trent Jeffree
02 9540 2222

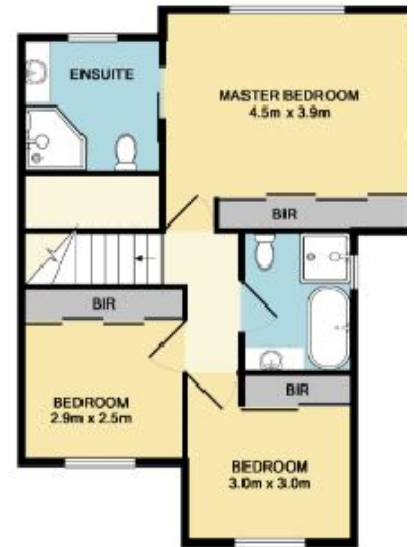
[For full version visit the website](https://www.jreproperty.com.au)



GROUND FLOOR
APPROX. FLOOR
AREA 162.4 SQ.M.
(1722 SQ.FT.)



1ST FLOOR
APPROX. FLOOR
AREA 87.9 SQ.M.
(946 SQ.FT.)



2ND FLOOR
APPROX. FLOOR
AREA 64.6 SQ.M.
(697 SQ.FT.)

TOTAL APPROX. FLOOR AREA 204.9 SQ.M. (2205 SQ.FT.)

Whilst every attempt has been made to ensure the accuracy of the floor plan contained here, measurements of doors, windows, rooms and any other items are approximate and no responsibility is taken for any error, omission, or mis-statement. This plan is for illustrative purposes only and should be used as such by any prospective purchaser. The services, systems and appliances shown have not been tested and no guarantee as to their operability or efficiency can be given.

Made with Metropix 4/2015